



Proudly made in
Canada
to Canadian
Standards



The Sterling Series

Sectional Homes





The Sterling Series



... is an acronym for “Shelter Regent Industries” and began in 1978 with a factory located in Estevan, Saskatchewan. The second factory, in Lethbridge, Alberta, became part of SRI in 1985. The newcomer, the Kelowna factory, began producing homes in 1992. SRI has built over **30,000** homes for all types of Canadian families since its beginning over 30 years ago.



It's all about design...

You can **customize** your floor plan, you can choose your décor. Do you need a large eat-in kitchen and island workspace for many chefs?

...or a quiet Master Bedroom **retreat**, generous walk-in closet and **spa-like** ensuite? Add the options that will make it **personal** so that it works for you and all your family members.

Let's get started...

The **Sterling Series** offers a full range of floor plans in both 27' and 30' wide homes. Sizes range from a **cozy** 1188 sq. ft. to a **spacious** 1800 sq. ft. All models feature a recessed front entry, some models offer covered front porches, and many models can easily take an additional attached garage or back yard deck for easy outdoor entertaining.



You choose the **home**
that fits your **lifestyle**.

and **SRI** will build your
dream home
for you.



Standards and Specifications

Exterior

- Maintenance-Free Vinyl Siding
- Painted Smartstart Window Trim
- Vinyl Corners to Match Siding
- Coloured Aluminum Fascia
- Recessed Front Entry
- Living Room Window Built-out Feature
- Residential 8' Sidewalls
- 2 x 6 Exterior Walls @ 24" OC /w 3 Belt Rails and R-22 Insulation
- Nominal 2.5/12 Fixed Roof Pitch on 27' Wides
- 5/12 Hinged-Roof Pitch on 30' Wides
- Architectural Fiberglass Shingles
- Attic Insulation: R-40 (*Common Areas*) R-32 (*Vaulted Areas*)
- Coach Lights at Exterior Doors
- 6 Panel Insulated Exterior Doors
- Low E & Argon Gas Thermal-Pane PVC Windows /w Screen and Safety Latch
- 19/32" T&G Floor Sheathing - Screwed & Glued
- 2x8 Floor Joists with R33 Insulation
- 2x10 Floor Joists on 30' Wide Homes
- Exterior G.F.I. Receptacle
- Frost-Free Exterior Tap
- Heat Tape Receptacle

Kitchen

- Rangehood Vented to Exterior
- Stainless-Steel Kitchen Sink
- Single-Lever Faucet /w Sprayer
- Pot and Pan Drawers (3 drawers)
- Bank of Drawers (4 drawers)
- Raised Corner Upper Cabinet /w Glass Accent (Most Models)
- Extended-Sink Cabinet (Most Models)
- Extended Counter Overhang (Most Models)
- Raised, Deep Cabinet over Refrigerator
- Four Designer-selected Cabinet Choices
- Pantry Cabinet or Walk-In Pantry (Most Models)
- Kitchen Island (Most Models)
- 18 Cu. Ft., 2-Door, Frost-Free Refrigerator
- 30" Easy-Clean Electric Range
- Plumbed & Wired for Dishwasher c/w Cabinet
- 6" x 6" Ceramic Tile Backsplash

Interior

- Cathedral Ceiling in Kitchen, Dining & Living Rooms
- Flat-Panel White Interior Doors
- Lever Handles on All Doors
- Carpet in Living Room, Master Bedroom & Hall
- Quality Vinyl Flooring in all Other Areas
- Designer Light Package
- Décora Switches and Receptacles
- Dual Closet Rods & Shelf in MBR Walk-in Closet
- 2" Blinds Throughout

Bathroom

- One-Piece Tub and Shower w/ Single-Lever Faucet
- Dual Handle Vanity Faucets
- Designer Light Fixture above Vanity
- Drawer(s) over Vanity Cabinet Doors (Most Models)
- Framed Vanity Mirror
- Raised Toilet /w Dual-Flush Control
- Curved Shower Rod with Liner
- 4" x 4" Spa-white Ceramic Tile Backsplash
- Exhaust Fan
- G.F.I. Protected Receptacle(s)
- Privacy Locks

Utilities

- 40 Gallon (IMP) Electric Water Heater
- 95% High-Efficiency A/C Ready Natural Gas Furnace w/ Electronic Ignition
- Smoke/Carbon Monoxide Detectors
- Plumbed & Wired for Washer & Dryer
- Full-width Washer & Dryer Cabinets - with hanging space for drying
- Shut-off Valves at Plumbing Fixtures
- Built to CSA Z-240 Standard

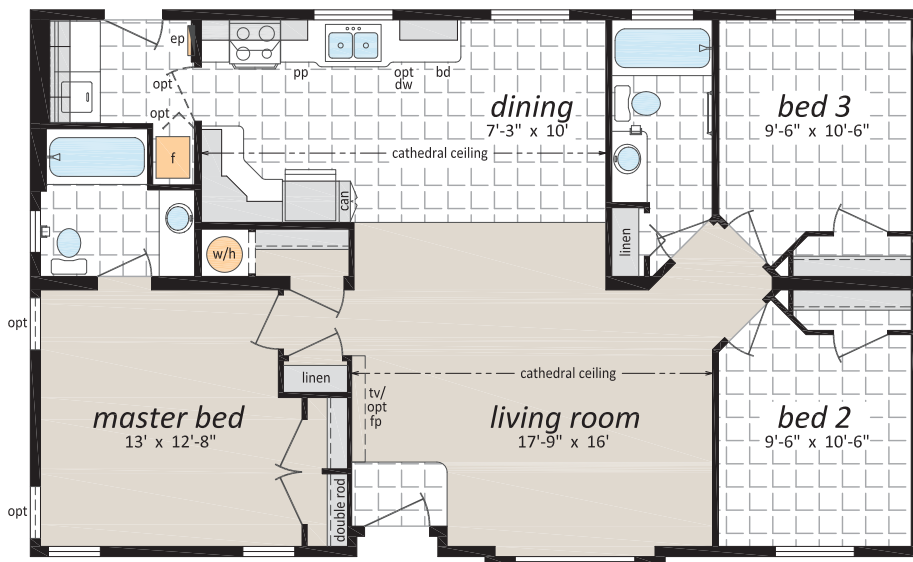


The Sterling Series



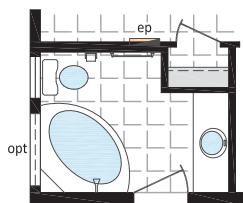
The Avon ST-7441

27' x 44' • 1,188 sq. ft.



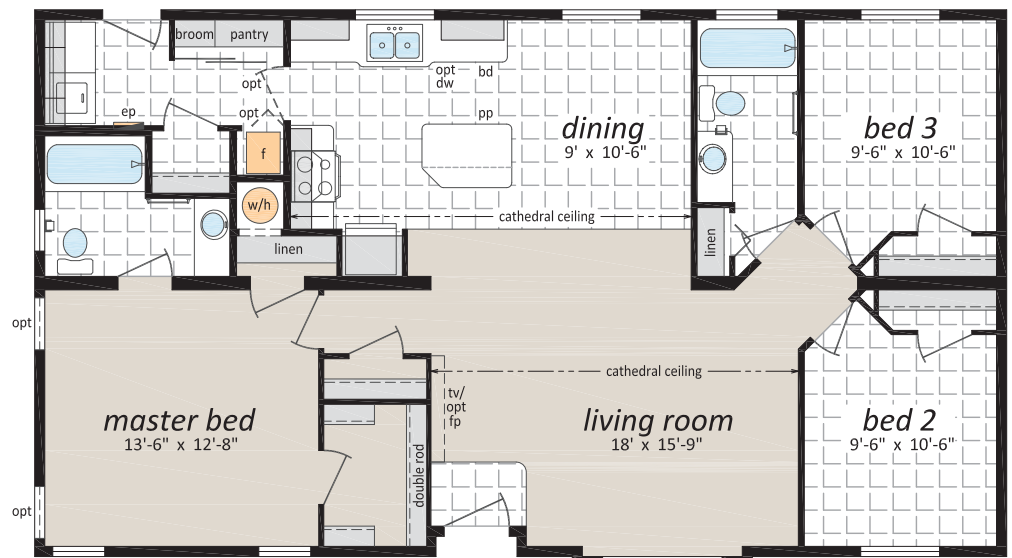
The Bedford ST-7481

27' x 48' • 1,296 sq. ft.



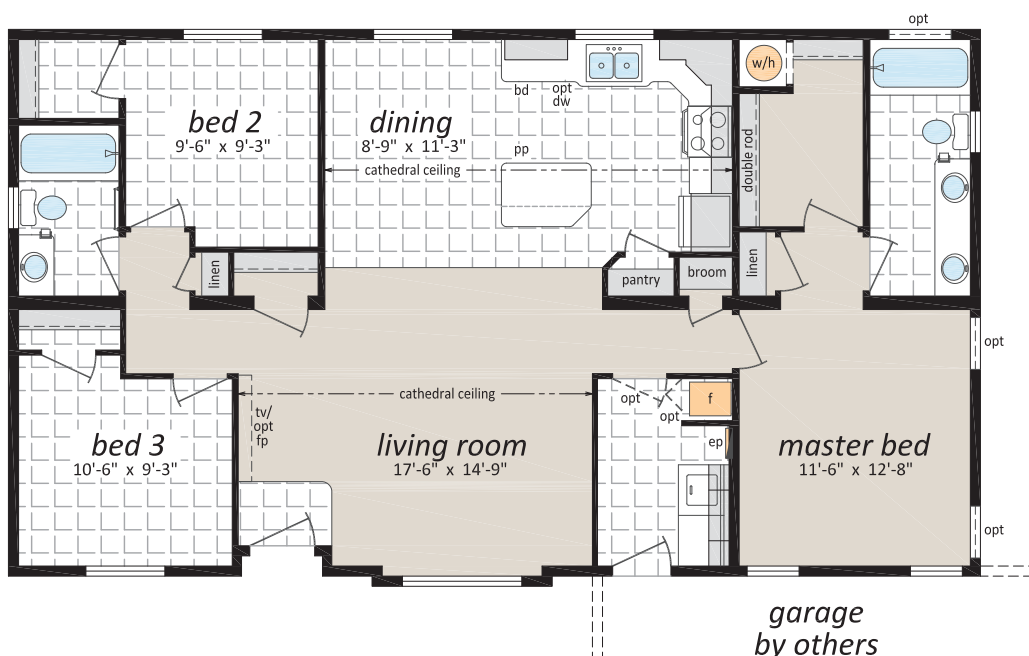
Optional Ensuite

(Note: Full photo on front cover)





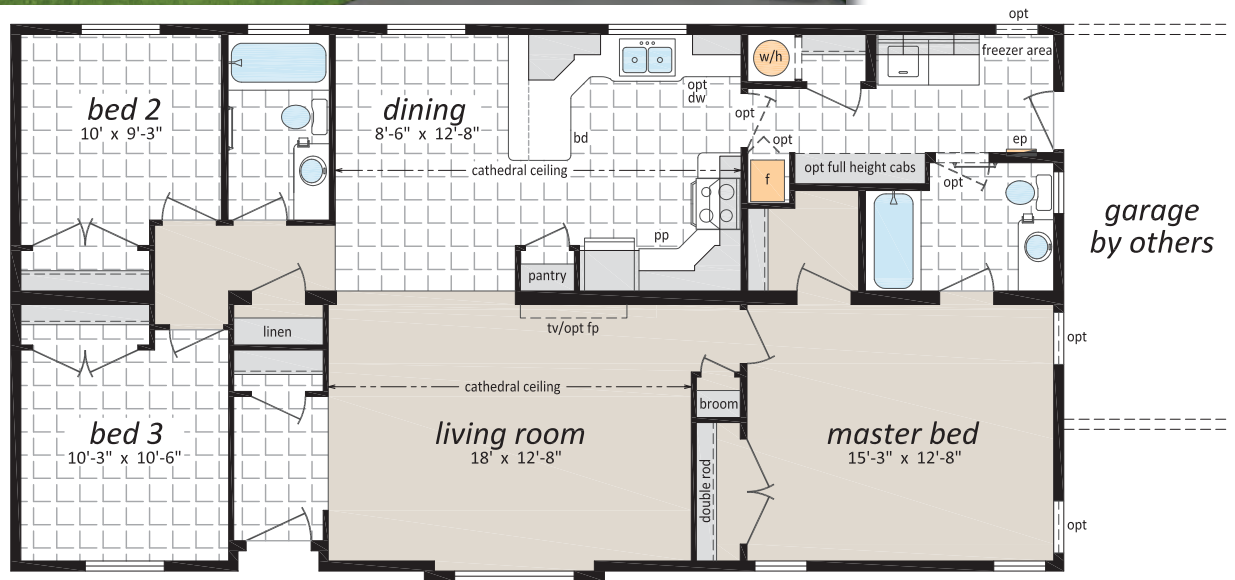
27' x 48' • 1,296 sq. ft.



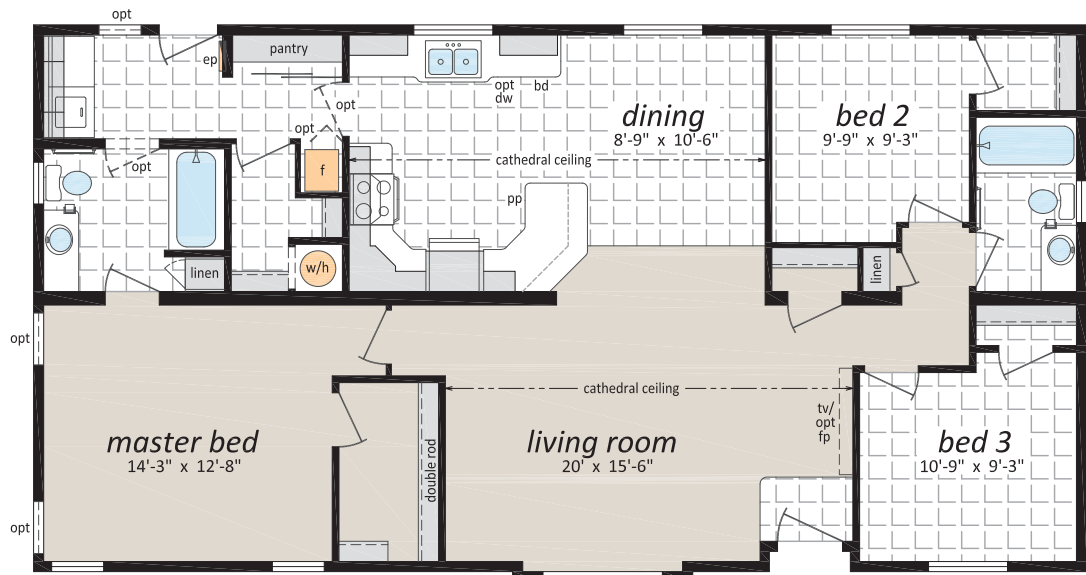
The Sterling Series



The Buckingham
ST-7521
27' x 52' • 1,404 sq. ft.



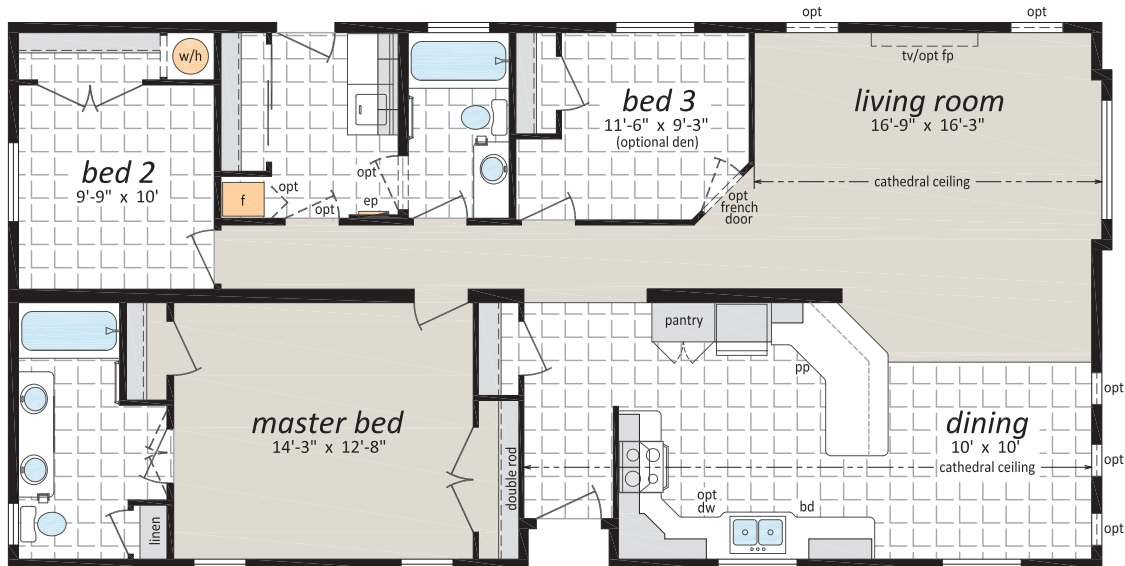
The Cambridge
ST-7522
27' x 52' • 1,404 sq. ft.



The Sterling Series

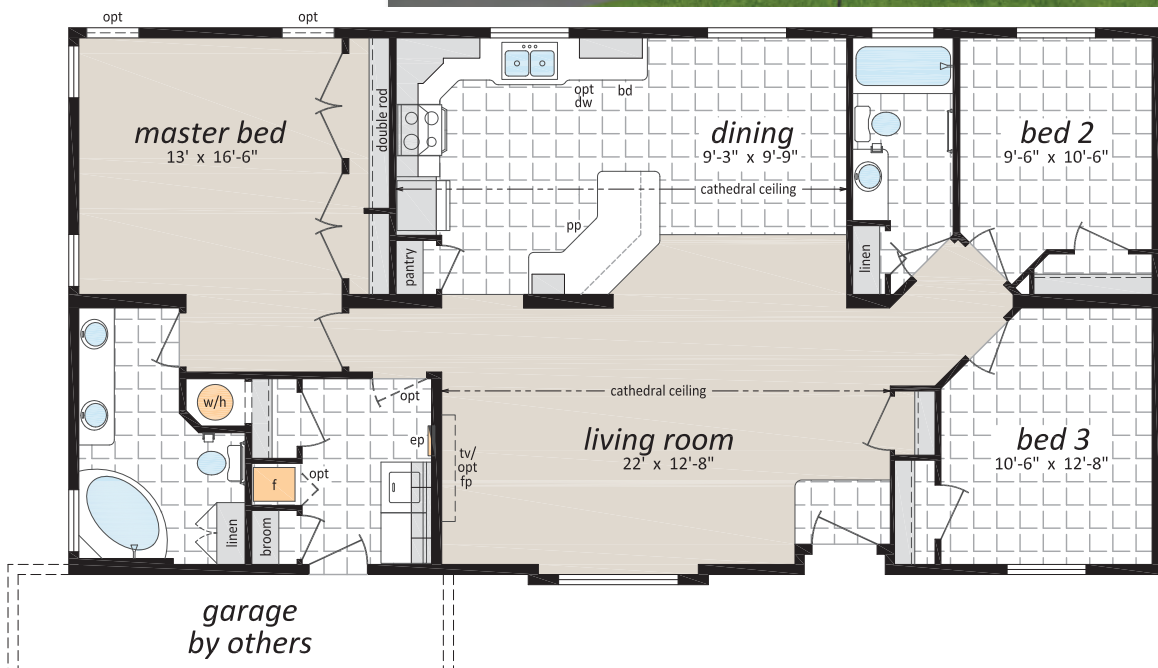
The Cheshire ST-7541

27' x 54' • 1,458 sq. ft.



The Cornwall ST-7542

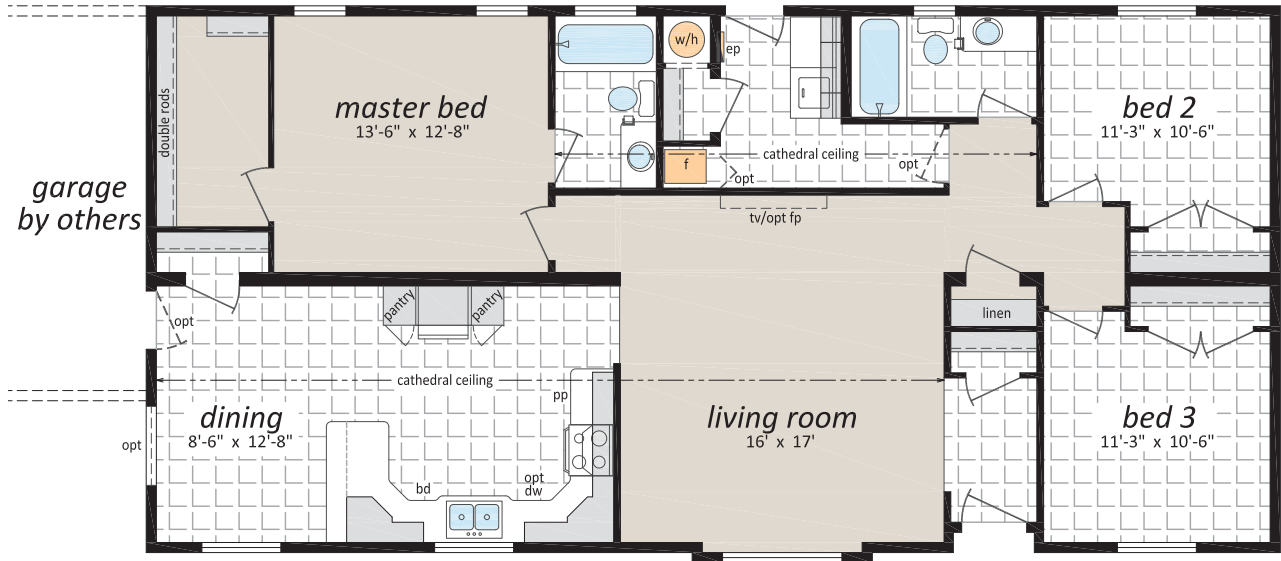
27' x 54' • 1,458 sq. ft.



The Sterling Series

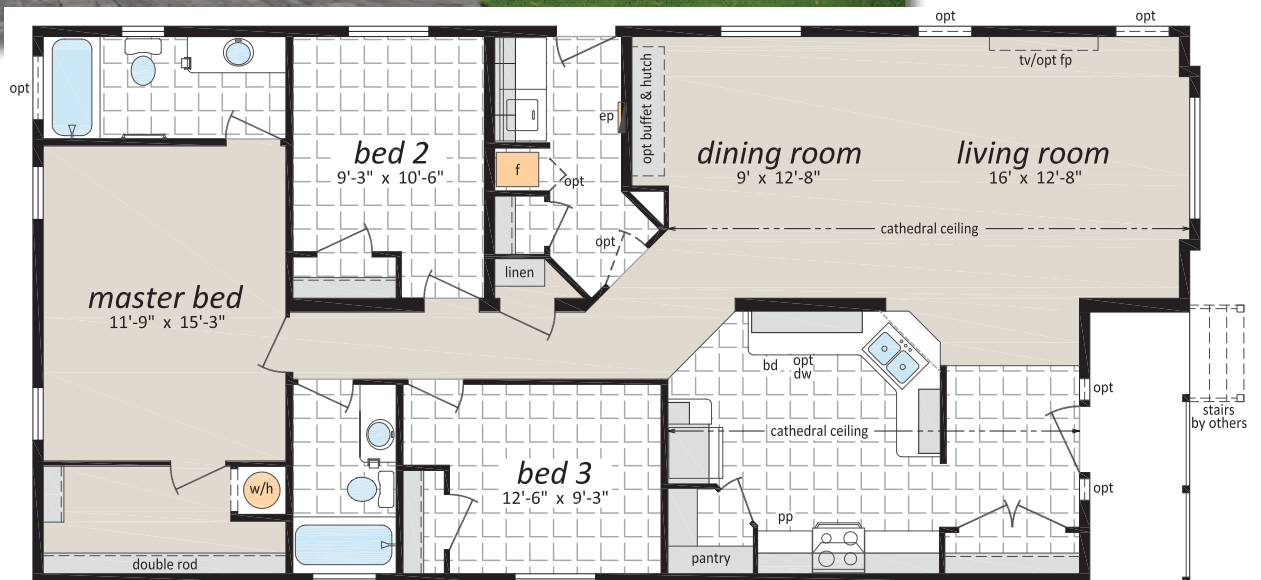
The Derby ST-7561

27' x 56' • 1,512 sq. ft.



The Devon ST-7562

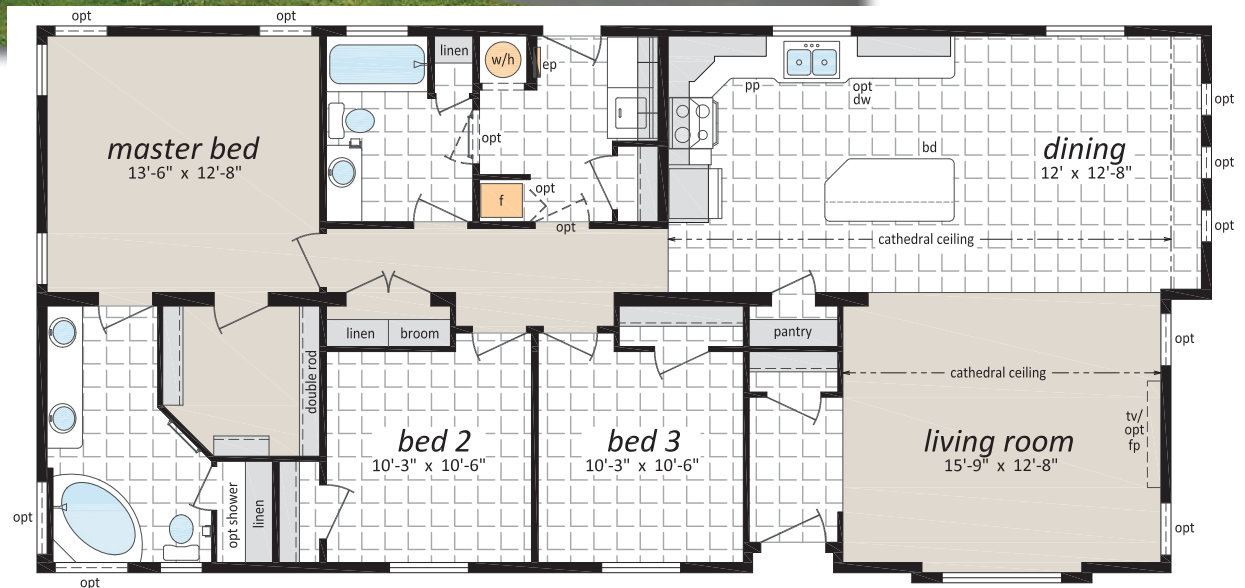
27' x 56' • 1,512 sq. ft.



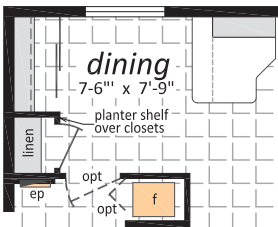
The Sterling Series



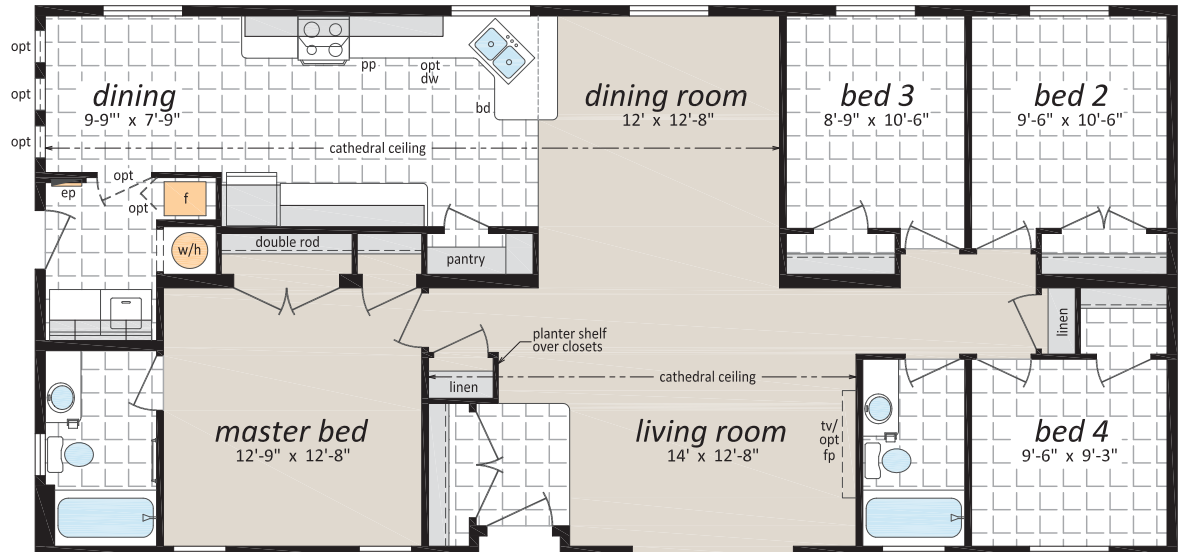
The Dorset
ST-7563
27' x 56'/58' • 1,539 sq. ft.



The Durham
ST-7564
27' x 56' • 1,512 sq. ft.



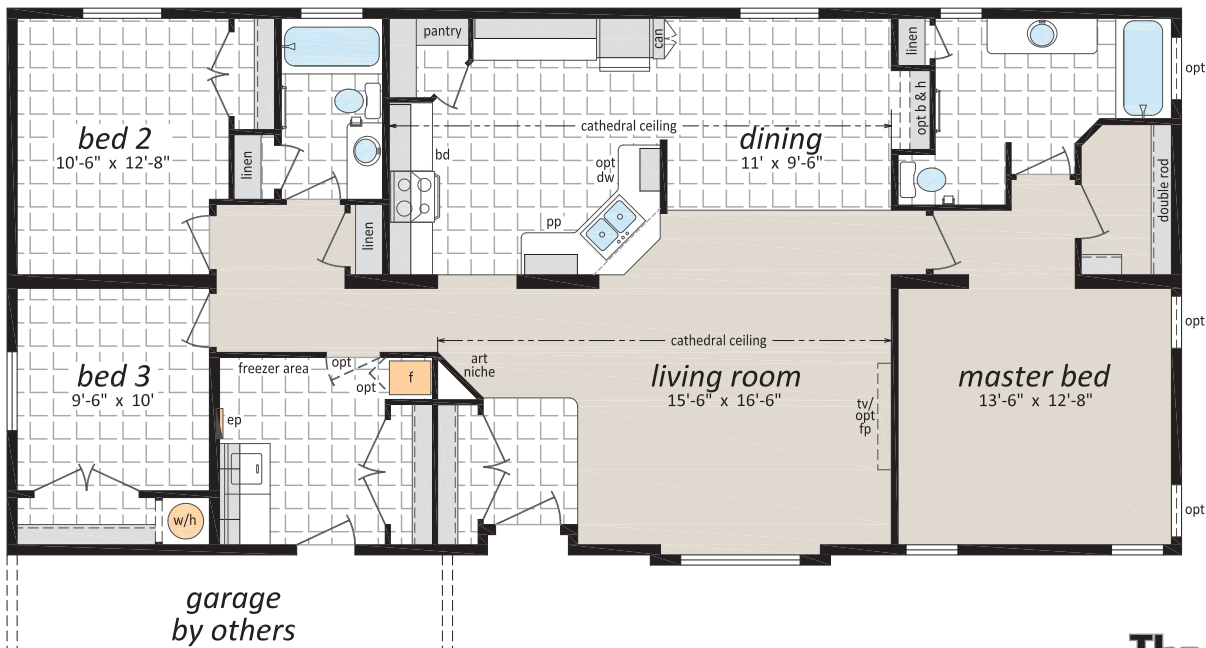
Optional Dining



The Sterling Series

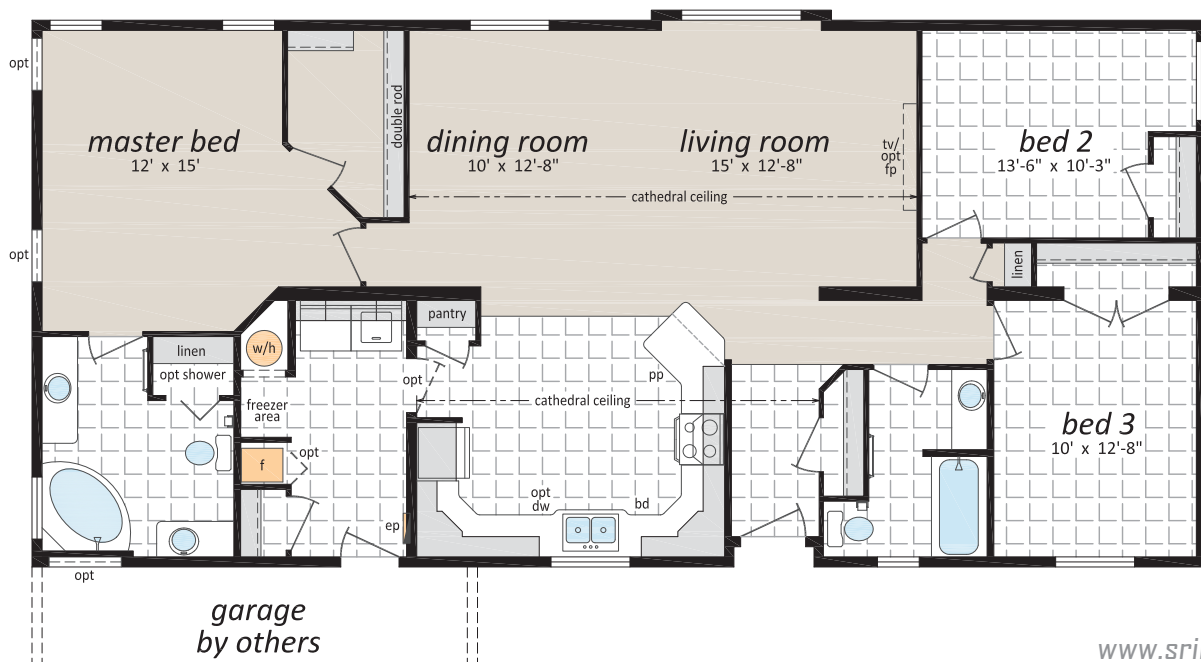
The Essex ST-7581

27' x 58' • 1,566 sq. ft.



The Hampshire ST-7582

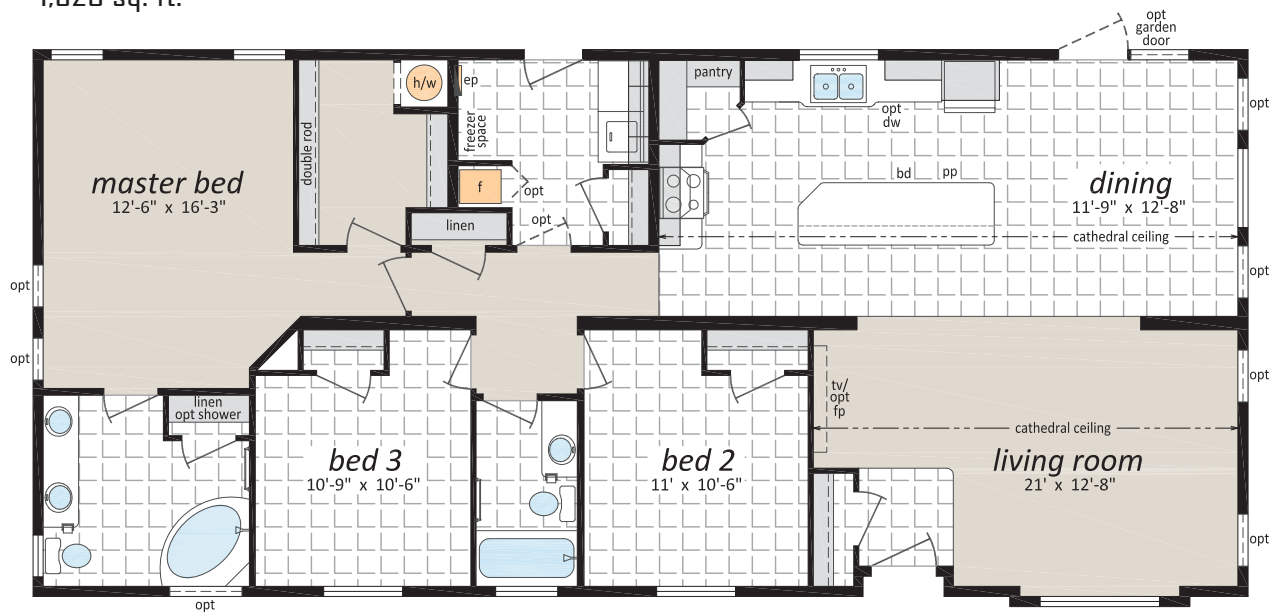
27' x 58' • 1,566 sq. ft.



The Sterling Series

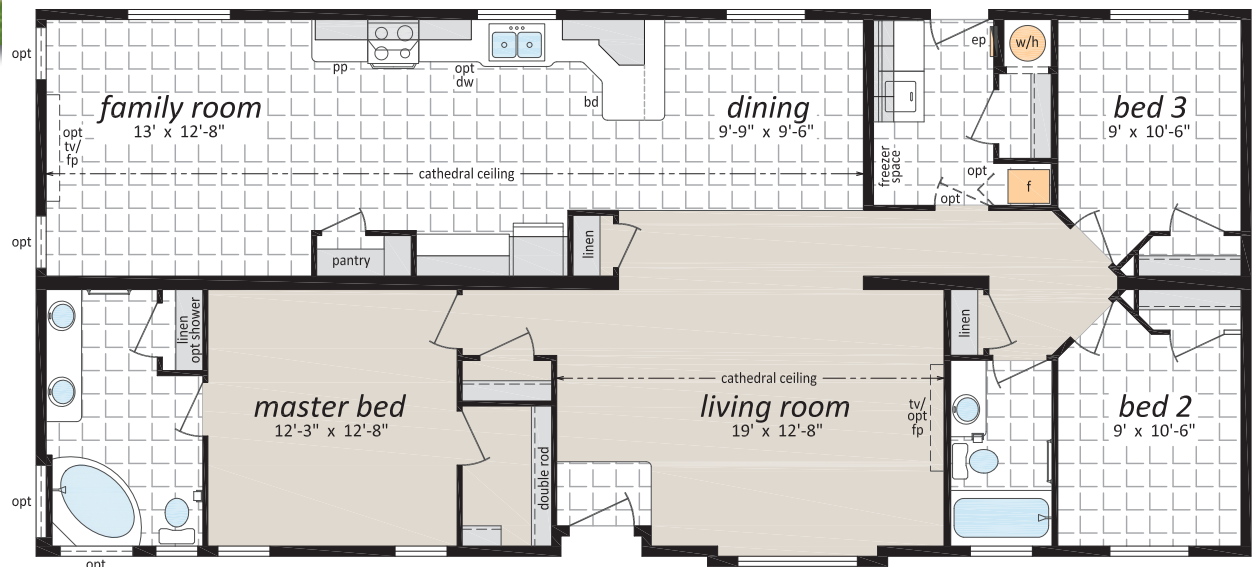
The Kent ST-7601

27' x 60' • 1,620 sq. ft.

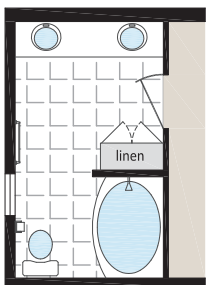


The Lancashire ST-7602

27' x 60' • 1,620 sq. ft.



Optional Ensuite





The Midlands

ST-7603

27' x 60' • 1,620 sq. ft.

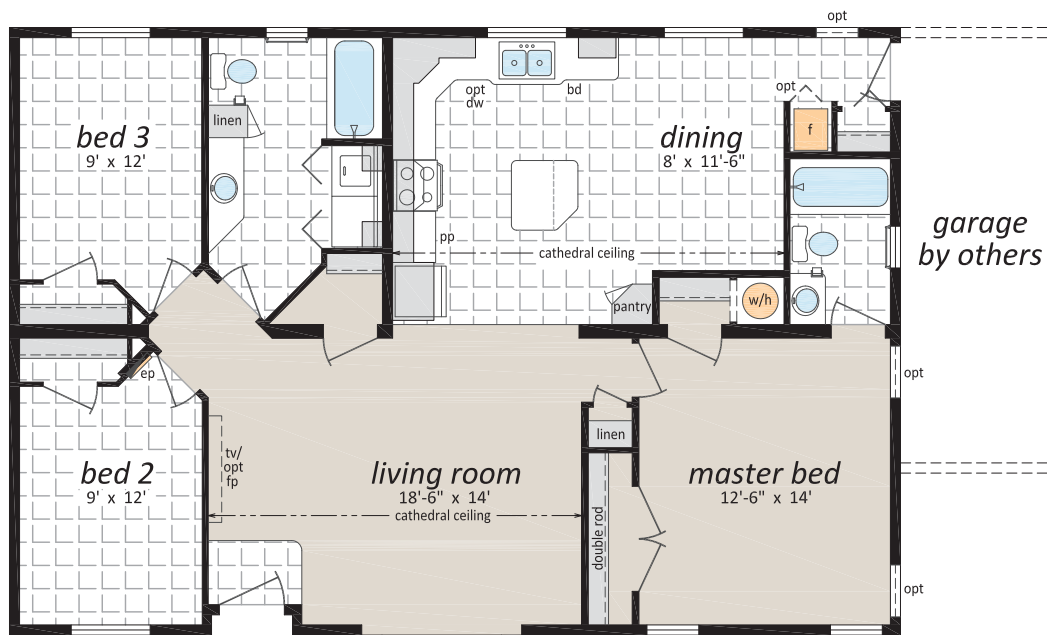


The Sterling Series

The Somerset

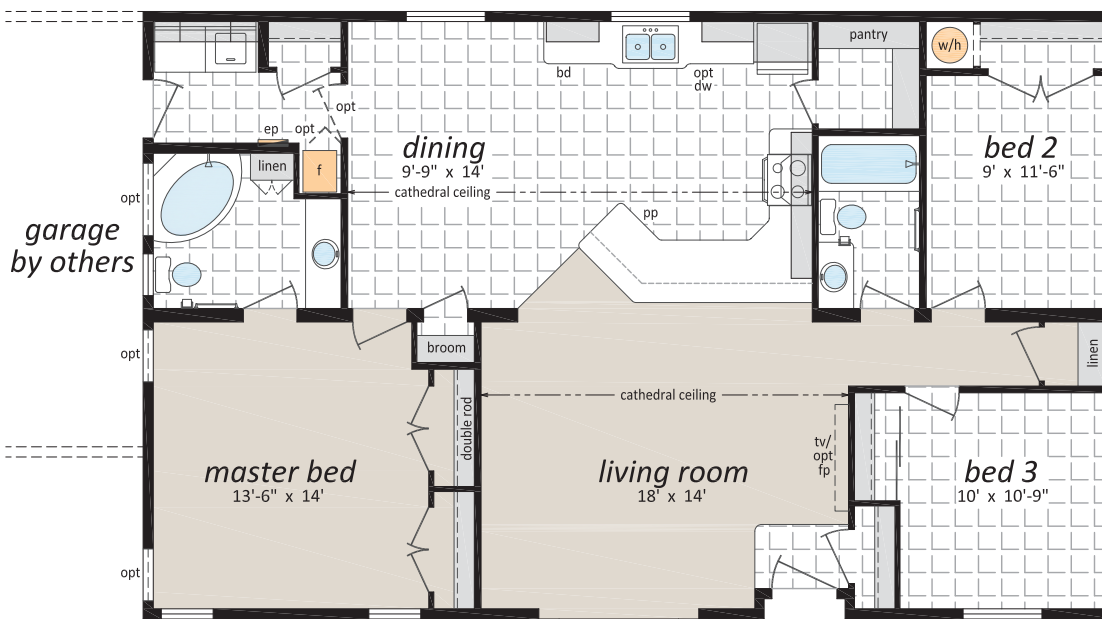
ST-3441

30' x 44' • 1,320 sq. ft.





30' x 48' • 1,440 sq. ft.

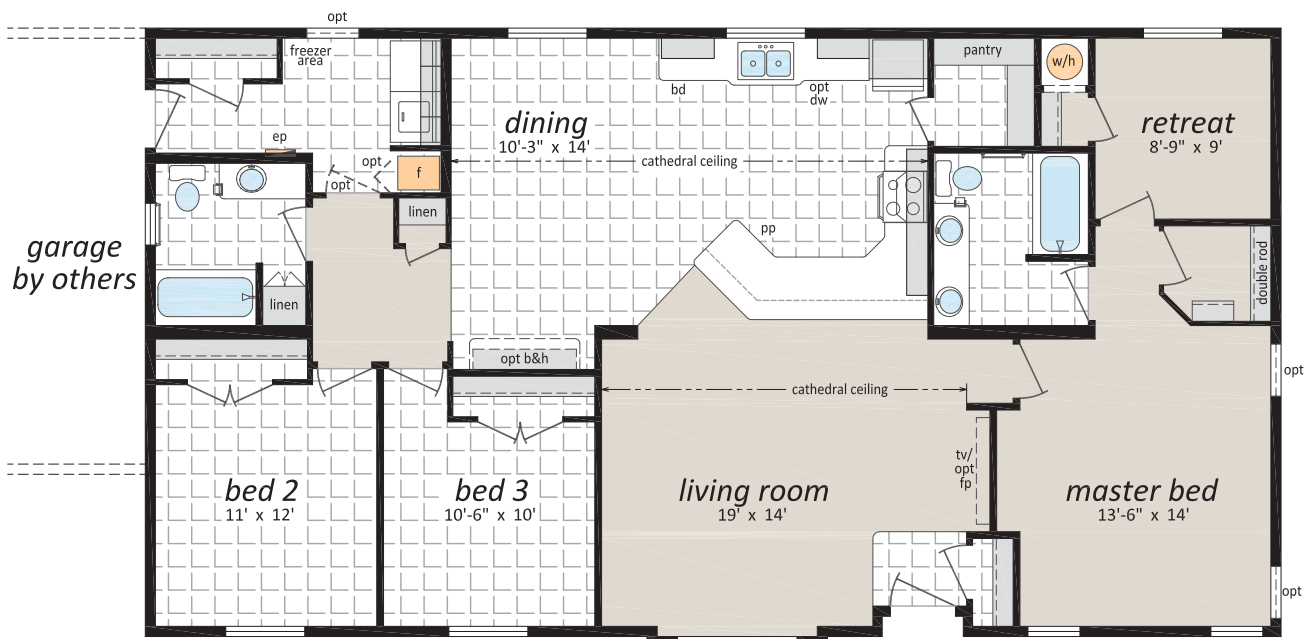
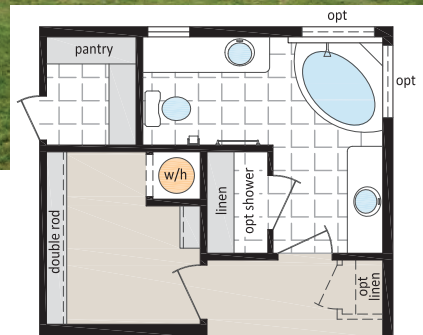


30' x 52' • 1,560 sq. ft.





30' x 56' • 1,680 sq. ft.



The Sterling Series



The Warwick ST-3541

30' x 54' • 1,620 sq. ft.



The Yorkshire ST-3601

30' x 60' • 1,800 sq. ft.





The Sterling Series



Popular Optional Features

Exterior

- ☐ Hardie Siding
- ☐ Third Gables
- ☐ Painted "Smart Start" Fascia, Window and Door Trim
- ☐ Painted Smart Start Shutters
- ☐ Garden or Patio Doors
- ☐ Exterior Door with Victoria, 9 Lite, Harlow or Niagara Insert
- ☐ Ladder" Grids in Windows
- ☐ Transom Windows
- ☐ Bay Windows, Skylights & Solar Tubes
- ☐ Octagon Vents
- ☐ Electric Door Chimes
- ☐ Extra Exterior GFI
- ☐ Faux Rock or Shake Accents

Utilities

- ☐ On Demand Water Heater
- ☐ 40 Gallon U.S. Gas Water Heater
- ☐ Baseboard Heating
- ☐ Forced Air Electric Furnace
- ☐ Heat Recovery Ventilation Unit
- ☐ Stacking Washer and Dryer
- ☐ Front Loading Washer and Dryer
- ☐ Central Vacuum system and/or Roughed in
- ☐ 200 Amp Service Panel
- ☐ Extra Telephone /Cable Box(es)
- ☐ Pre-wire for Telephone and/or Cable

Bathroom

- ☐ Oval Tub or Corner Oval Tub
- ☐ Jetted Spa Option (available on any tub)
- ☐ 2 Person Jetted Spa Tub
- ☐ 36", 48" or 60" Shower Stall
- ☐ Low-Barrier Shower
- ☐ Grab Bars
- ☐ Assorted Medicine Cabinets

Interior

- ☐ Upgrade Trim Package
- ☐ White Painted Trim Upgrade
- ☐ Painted Drywall with Ceiling Cove Moulding
- ☐ Conmore White Passage Doors
- ☐ Upgrade Vinyl Flooring
- ☐ Carpeting in Additional Bedrooms
- ☐ 2" Faux Wood Blinds
- ☐ French Doors
- ☐ Mirrored Bi-fold Closet Doors
- ☐ Utility Room Door with Grill
- ☐ Freezer and Laundry Cabinets
- ☐ Soak Sink with Cabinet
- ☐ Ceiling Fan with Lights
- ☐ Recessed Pot Lights
- ☐ LED Light Disk
- ☐ Electric Fireplace with Mantle
- ☐ Gas Fireplace with Fan and Mantle

Kitchen

- ☐ Natural Wood Cabinet Doors
- ☐ Island Work Centre
- ☐ Upgrade High Definition Counter Laminate
- ☐ Upgrade High Definition Bevelled Counter Edging
- ☐ Wood Reveal Counter Edging
- ☐ Appliance Garage
- ☐ Multi Row Tile Backsplash with mosaic
- ☐ Pullout Trash and Recycle bins
- ☐ Pantry Cabinets
- ☐ Additional Bank of Drawers
- ☐ Planning Centre
- ☐ Lazy Susan
- ☐ Black Sink
- ☐ Upgrade Moen Faucets
- ☐ Built-In Dishwasher
- ☐ Combination Microwave/Range Hood
- ☐ Stainless Steel Canopy Range Hood
- ☐ Eye Level Oven with Cook Top
- ☐ Gas or Ceramic Top Self Cleaning Range
- ☐ Two Door Side by Side Refrigerator (with water and ice maker) or Bottom Freezer
- ☐ Stainless Appliances



Did you know?

SRI homes are built indoors, never exposed to the outdoor elements, and we continually inspect our homes to ensure our rigorous construction standards are met. We use quality, brand-name building materials, fixtures and appliances in every home we build.



Authorized Retailer:



Proudly made in
Canada
to Canadian
Standards



This is not a fully detailed specification. SRI Homes reserves the right to change specifications, designs, materials and suppliers without notice and without incurring obligation. Information contained herein is from data available at the time of printing. Photos and renderings may show optional features. 11/2020