



Proudly made in
Canada
to Canadian
Standards

The Modular Home Series



SRI
Kelowna

The Modular Home Series



... is an acronym for “Shelter Regent Industries” and began in 1978 with a factory located in Estevan, Saskatchewan. The second factory, in Lethbridge, Alberta, became part of SRI in 1985. The newcomer, the Kelowna factory, began producing homes in 1992.

SRI has built over **40,000** homes for all types of Canadian families since its beginning over 39 years ago.



It's all about design...

You can **customize** your floor plan, you can choose your décor. Do you need a large eat-in kitchen and island workspace for many chefs?

...or a quiet Master Bedroom **retreat**, generous walk-in closet and **spa-like** ensuite?

Add the options that will make it **personal** so that it works for you and all your family members.

Let's get started...

The **Modular Home Series** offers a full range of floor plans in both 27' and 30' wide homes, in **Rancher** (Self-Contained Crawlspace) or **Split Entry** home styles. Sizes range from a **cozy** 1,188 sq. ft. to a **spacious** 1,782 sq. ft. Many models are designed to work with attached garages or back yard decks for easy outdoor entertaining.



You choose the **home**
that fits your **lifestyle**.

and **SRI** will build your
dream home
for you.



Standards and Specifications

Exterior

- Maintenance-Free Vinyl Siding
- Architectural Fibreglass Shingles
- 5/12 roof pitch w/ R52 Insulation
- Coloured Aluminum Fascia
- Coach Lights at all Exterior Doors
- 6-Panel Insulated Exterior Doors
- Low E/Argon Energy Efficient Windows with Screens & Security Latches
- 2x6 Exterior Walls @ 24" o.c. with R22 Insulation
- Modular House Wrap
- 23/32" OSB T&G Floor - Screwed and Glued
- Engineered Floor System (with R31 Insulation in Crawlspace Models)
- Exterior G.F.I. Receptacle
- Frost Free Tap

Kitchen

- Rangehood with Two Speeds and Light, Vented to Exterior
- Stainless-Steel Kitchen Sink
- Single-Lever Faucet /w Sprayer
- Modular PVC Cabinets & Designer Hardware
- Raised Corner Upper Cabinet with Glass Accent (Most Models)
- Extended-Sink Cabinet & Countertop (Most Models)
- Raised Deep Cabinet over Refrigerator
- Adjustable Shelves in Uppers
- Bank of Drawers (4 drawers)
- Pots & Pan Drawers (3 drawers)
- Crown Moulding
- 6" x 6" Tile Backsplash

Bathroom

- One Piece Tub and Shower w/ Single-Lever Faucet
- Dual Handle Vanity Faucets
- Designer Light Fixture over Vanity
- Curved Shower Rod /w Liner
- 4" x 4" Spa-white Tile Backsplash
- Exhaust Fan in Bathroom
- G.F.I. Protected Receptacle in Bathroom
- Privacy Locks

Interior

- 8' High Ceilings
- Textured Ceilings
- Craftsman Square-edge White Interior Trim
- Cove Ceiling Moulding
- Painted Drywall with Rounded Corners
- Conmore White Passage Doors
- Lever Handles on all Doors
- Bi-fold Closet Doors
- Carpet in LR, DR, All BR's, Hall & Den/Family Room
- Linoleum Elsewhere
- Designer Light & Hardware Package
- Privacy Locks on Bath & MBR
- Decora Switches & Receptacles

Utilities

- 40 Gallon (Imp) Electric Water Heater (Crawlspace Homes)
- High-Efficiency A/C Ready Natural Gas Furnace with Electronic Ignition (Crawlspace Homes)
- Whole House Ventilation System
- Combination Carbon Monoxide/Smoke Detectors
- Plumbed/Wired for Washer and Dryer (Crawlspace Homes)
- Built to Applicable Provincial Codes



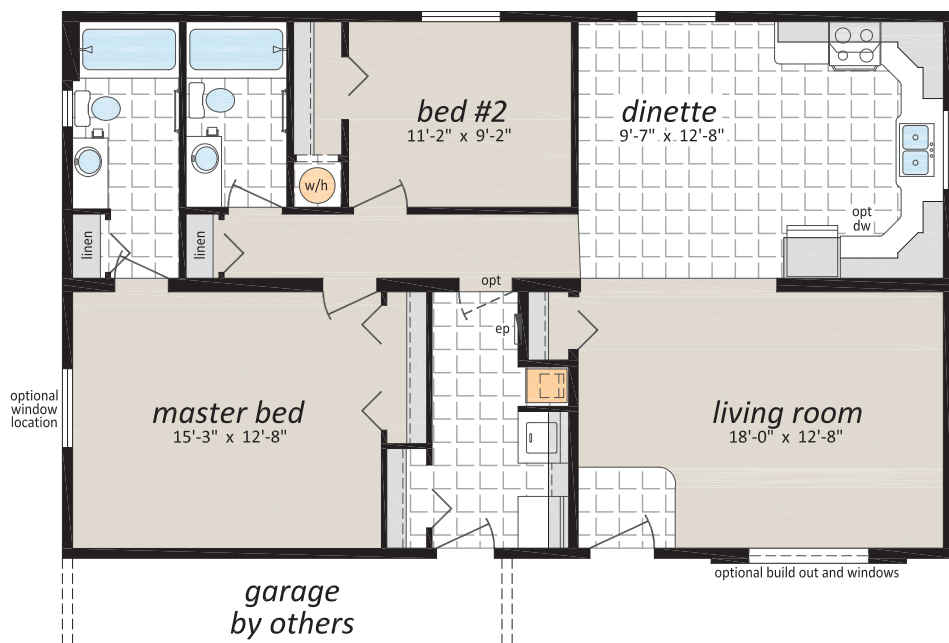
27' x 44' • 1,188 sq. ft.



The Montrose

CDF-244

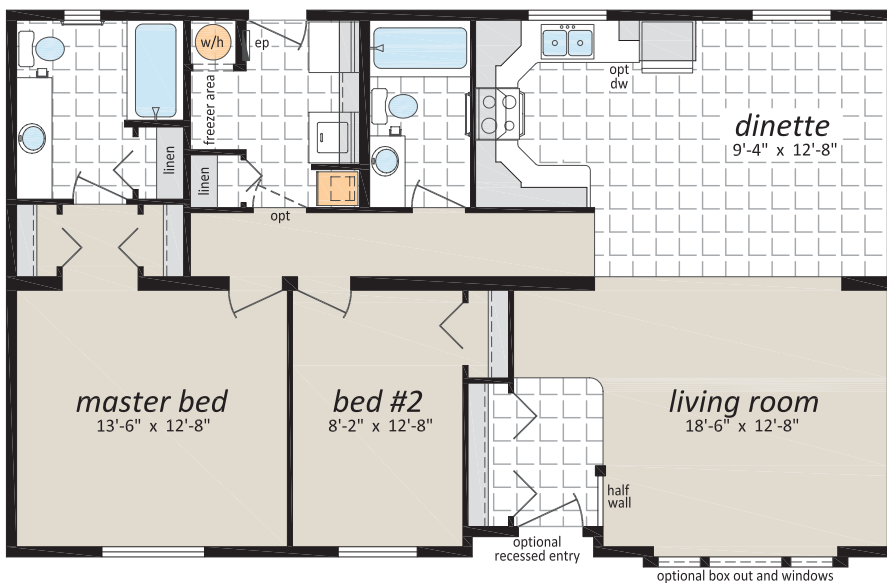
27' x 44' • 1,188 sq. ft.



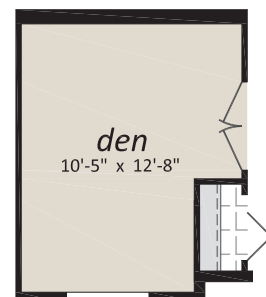
The Kitimat

CDF-290

27' x 44' • 1,188 sq. ft.



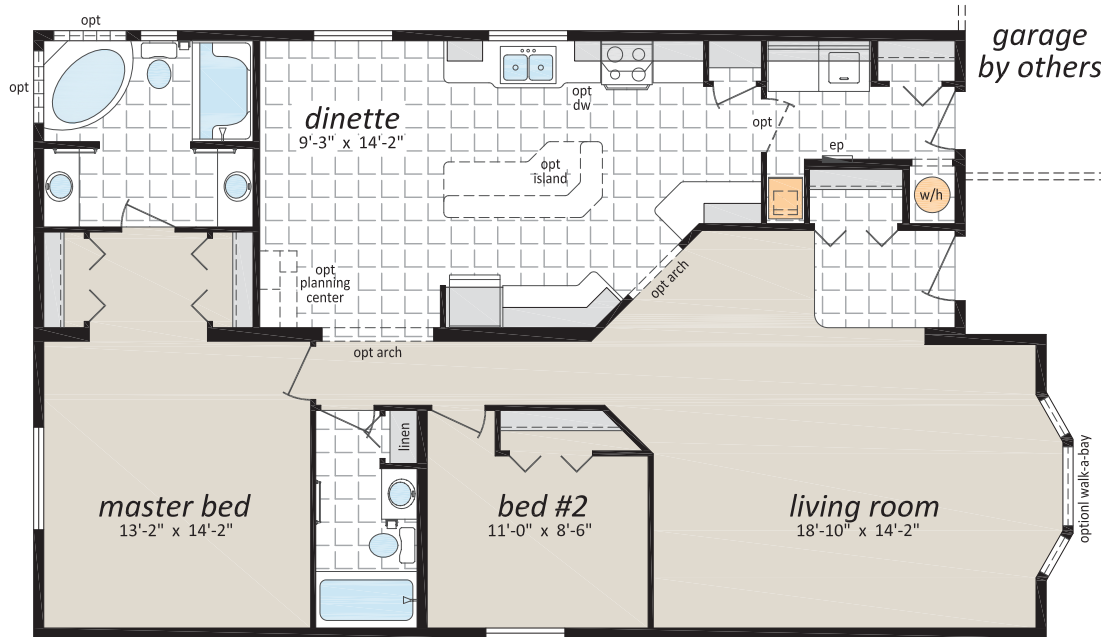
Optional Den
(in lieu of bed #2)



30' Wide Floorplan
for limited areas of BC
(please check with your SRI retailer)

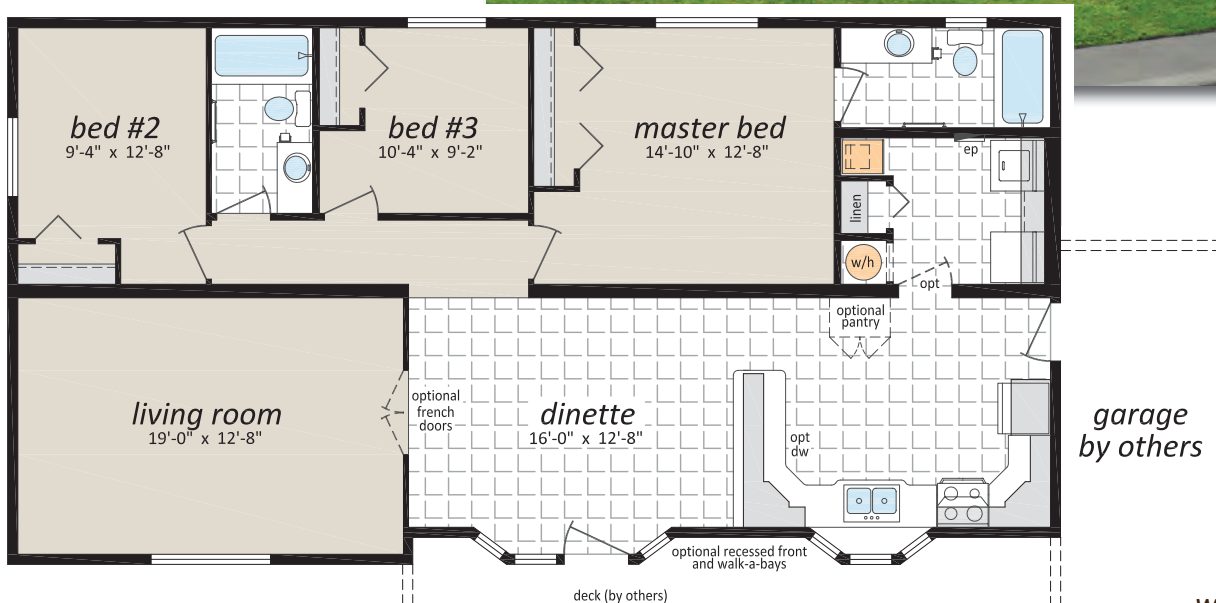
The Tulameen
CDF-305

30' x 46'/50' • 1,440 sq. ft.



The Langley
CDF-225

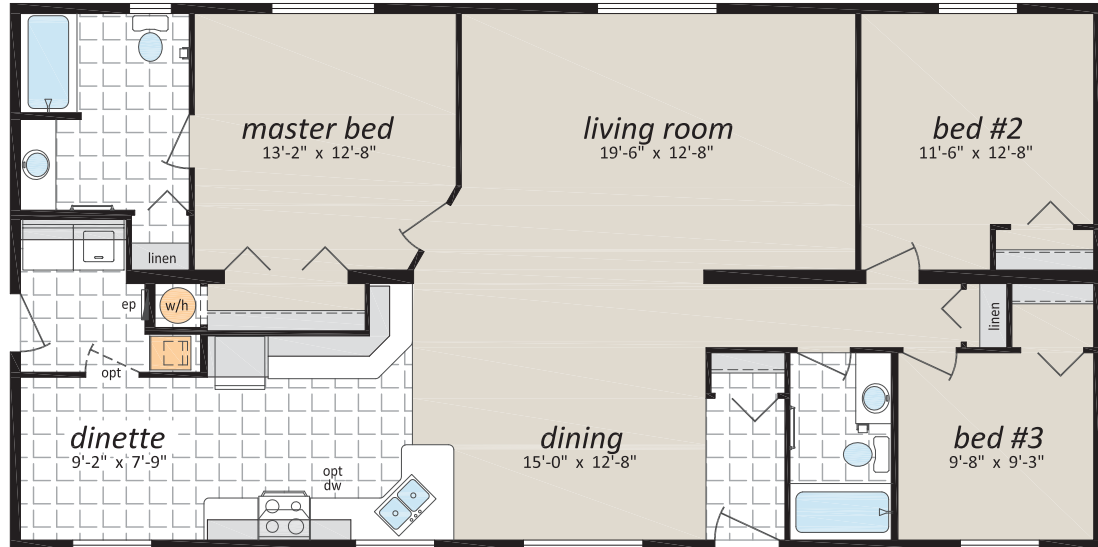
27' x 52' • 1,404 sq. ft.



The Richmond

CDF-280

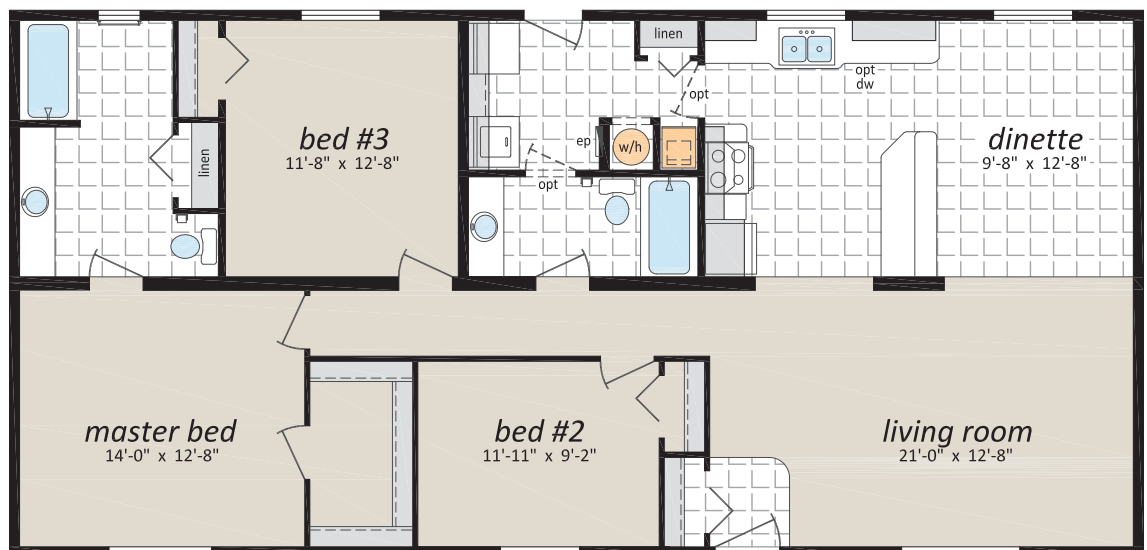
27' x 54' • 1,458 sq. ft.



The Millwood

CDF-211

27' x 56' • 1,512 sq. ft.



The Celista

CDF-296

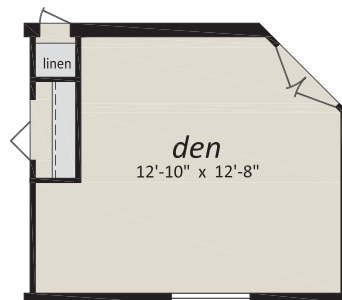
27' x 58' • 1,566 sq. ft.



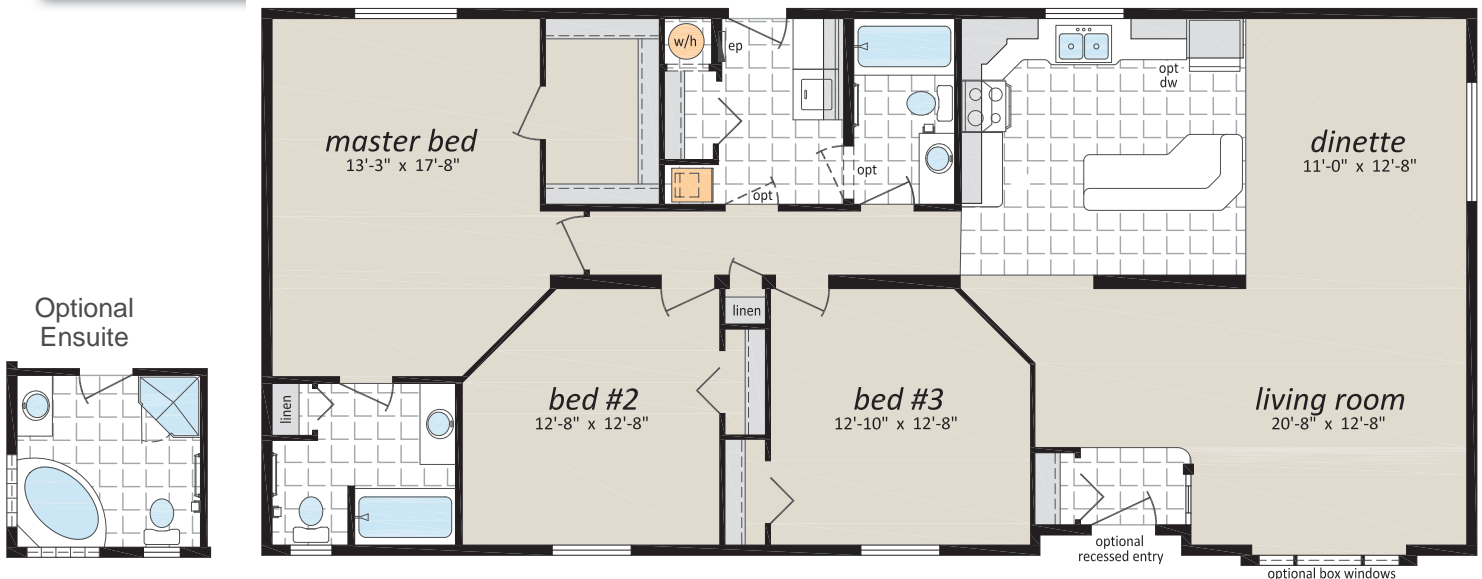
The Vernon

CDF-240

27' x 60' • 1,620 sq. ft.



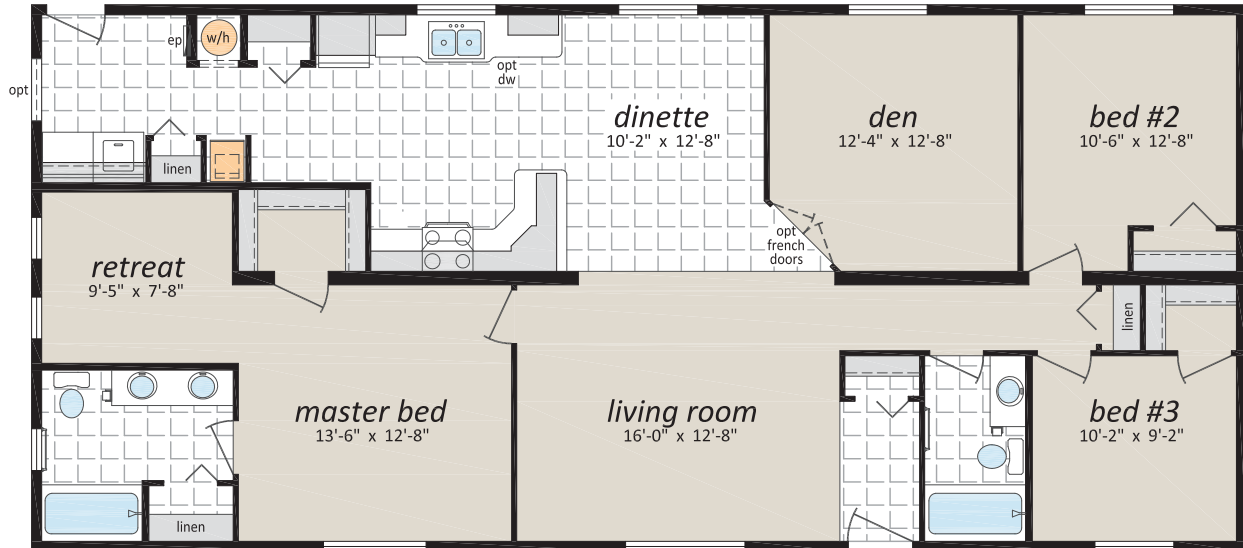
Optional Den
(in lieu of bed #3)



The Saturna

CDF-241

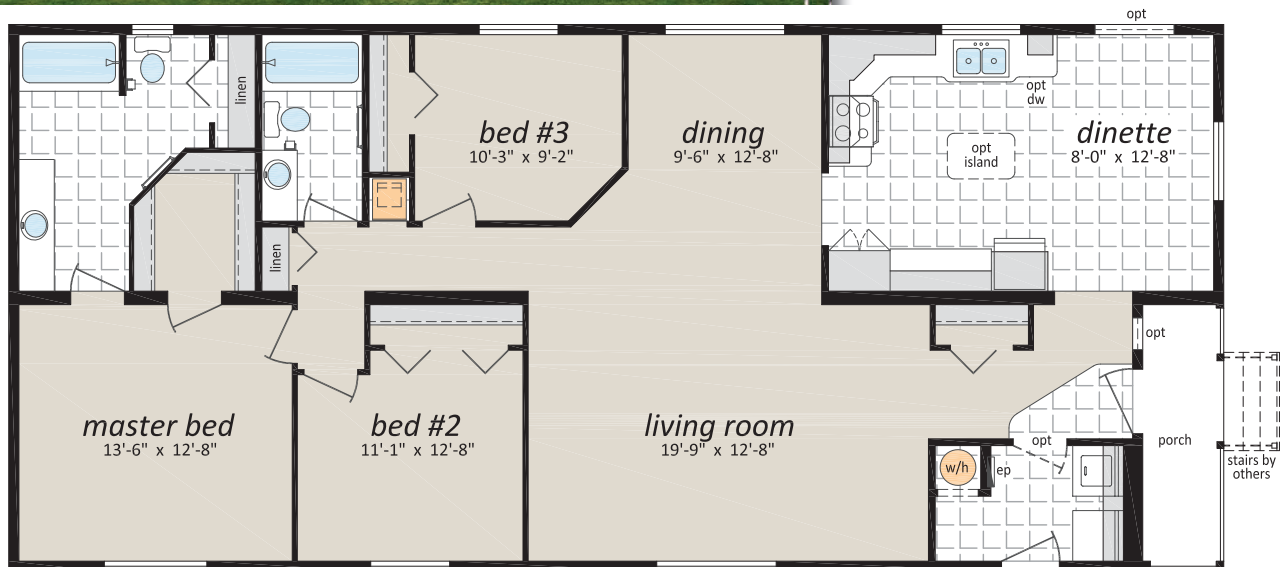
27' x 60' • 1,620 sq. ft.



The Falkland

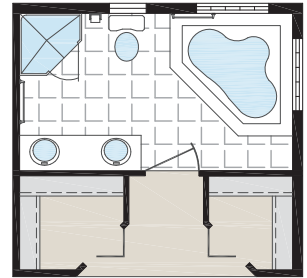
CDF-245

27' x 60' • 1,620 sq. ft.



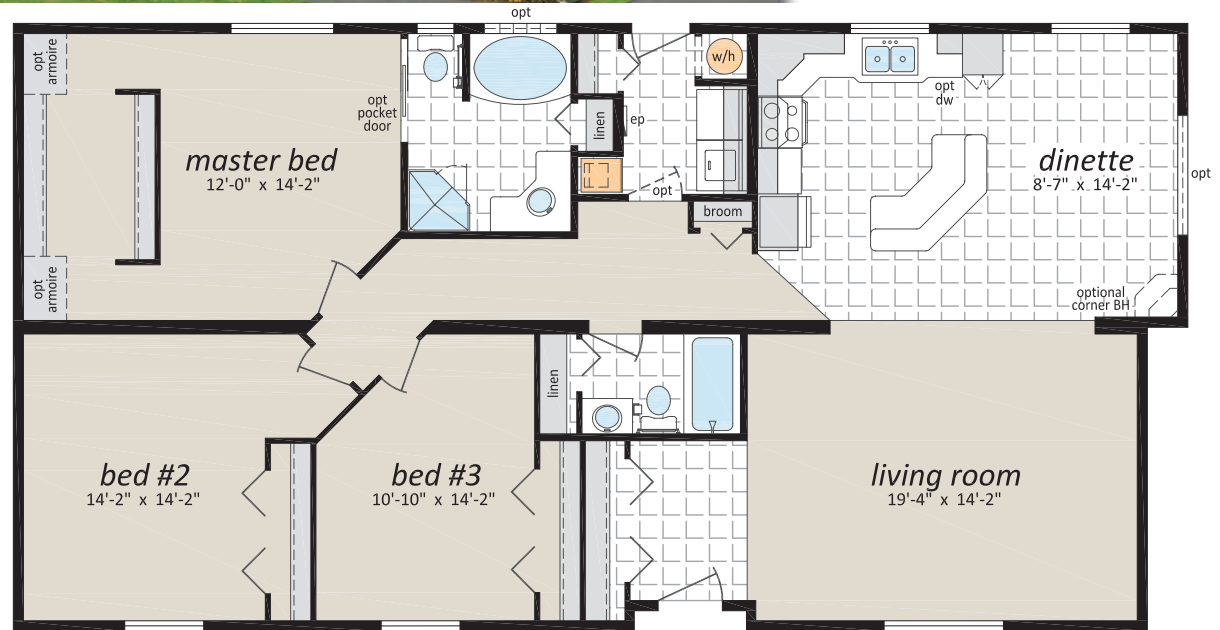
27' x 66' • 1,782 sq. ft.

A floor plan of a bathroom. It features a bathtub on the right side, a toilet on the left side, and a sink with two circular mirrors above it at the top. The floor is divided into a tiled upper section and a carpeted lower section by a threshold.

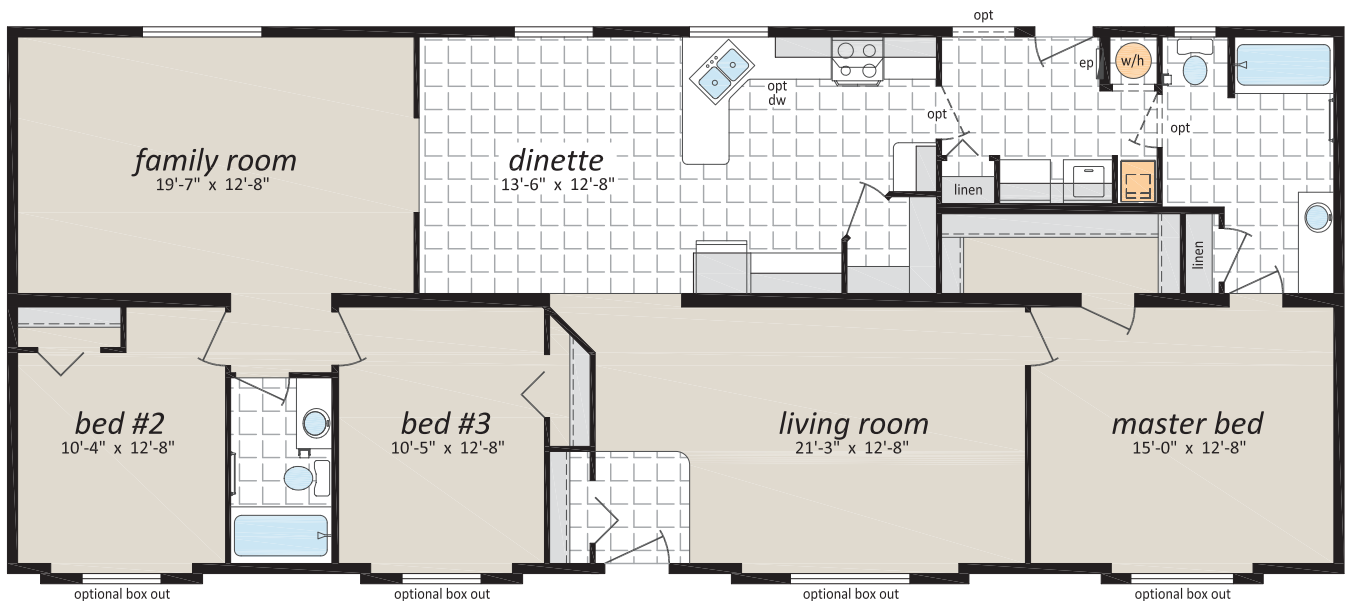




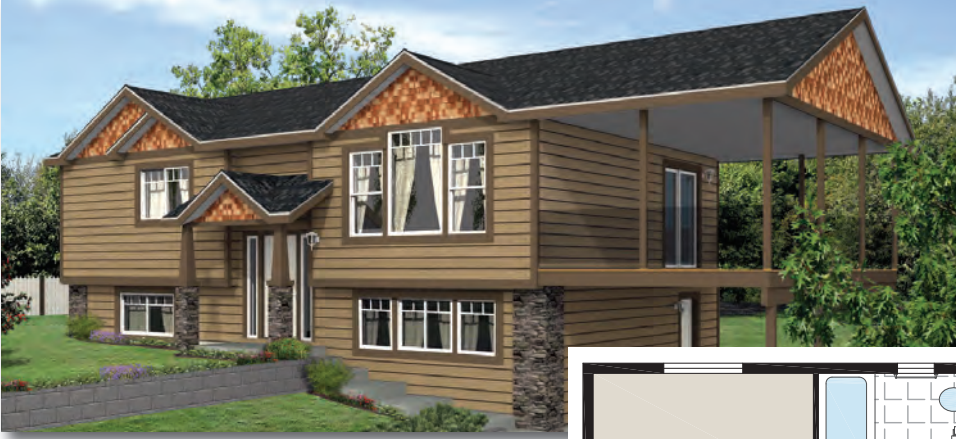
The Jaffray
CDF-300
30' x 58'/56' • 1,710 sq. ft.



The Thetis
CDF-253
27' x 66' • 1,782 sq. ft.

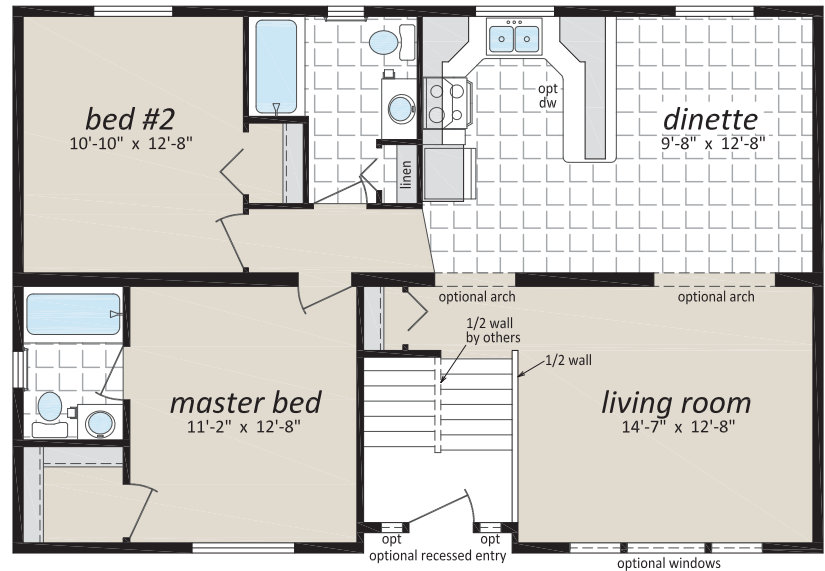
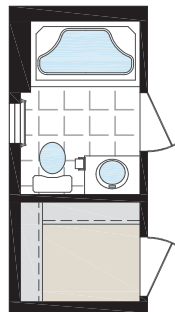


Split Entry Homes

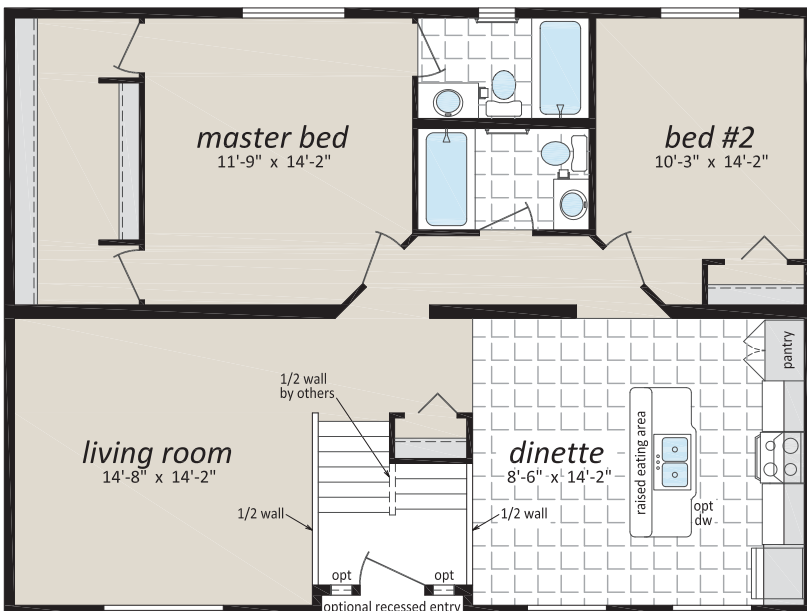


The Wenatchee
CDF-230
27' x 40' • 1,080 sq. ft.

Optional
Ensuite



The Cedarville
CDF-310
30' x 40' • 1,200 sq. ft.



30' Wide Floorplan

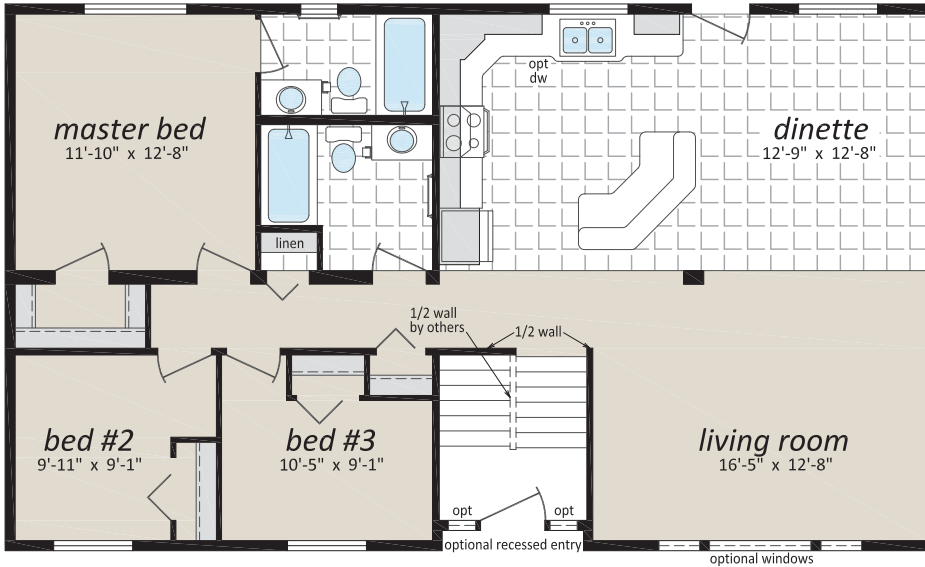
for limited areas of BC
(please check with your SRI retailer)

Split Entry Homes

The Long Beach

CDF-236

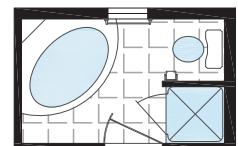
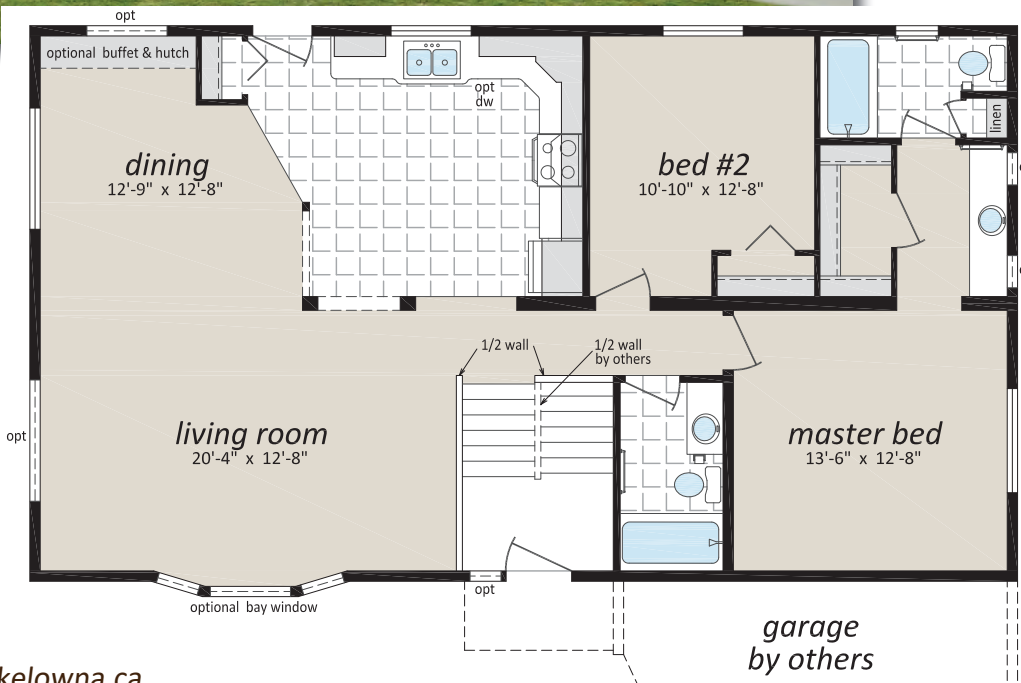
27' x 46' • 1,242 sq. ft.



The Chemainus

CDF-201

27' x 48' • 1,296 sq. ft.



Optional
Ensuite

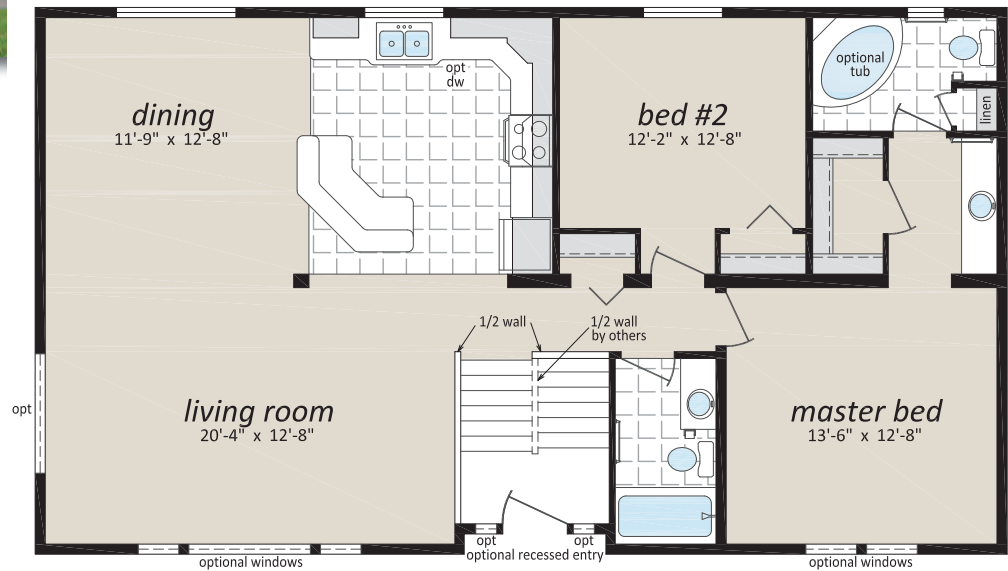
Split Entry Homes



The Drummond

CDF-203

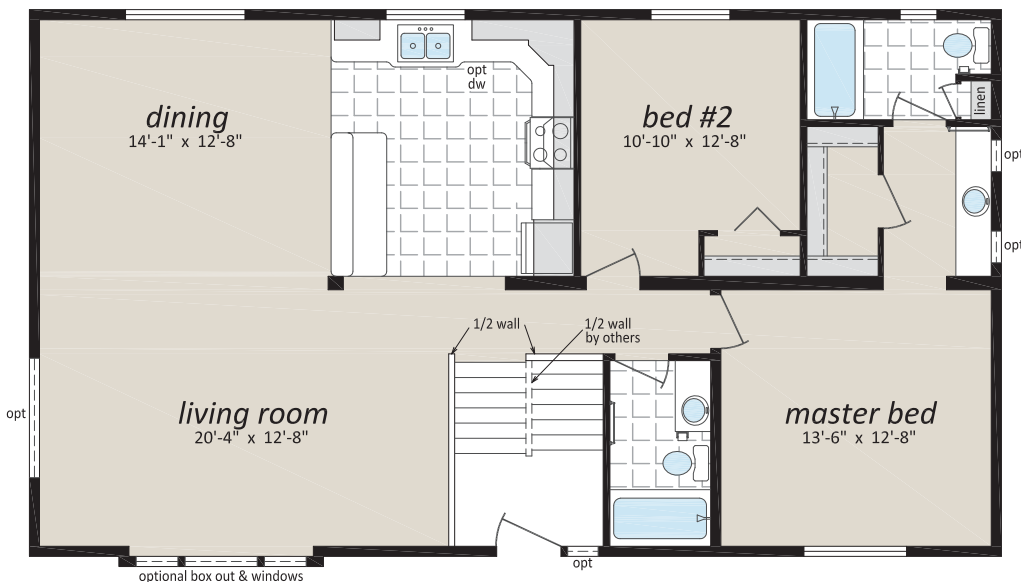
27' x 48' • 1,296 sq. ft.



The Victoria

CDF-204

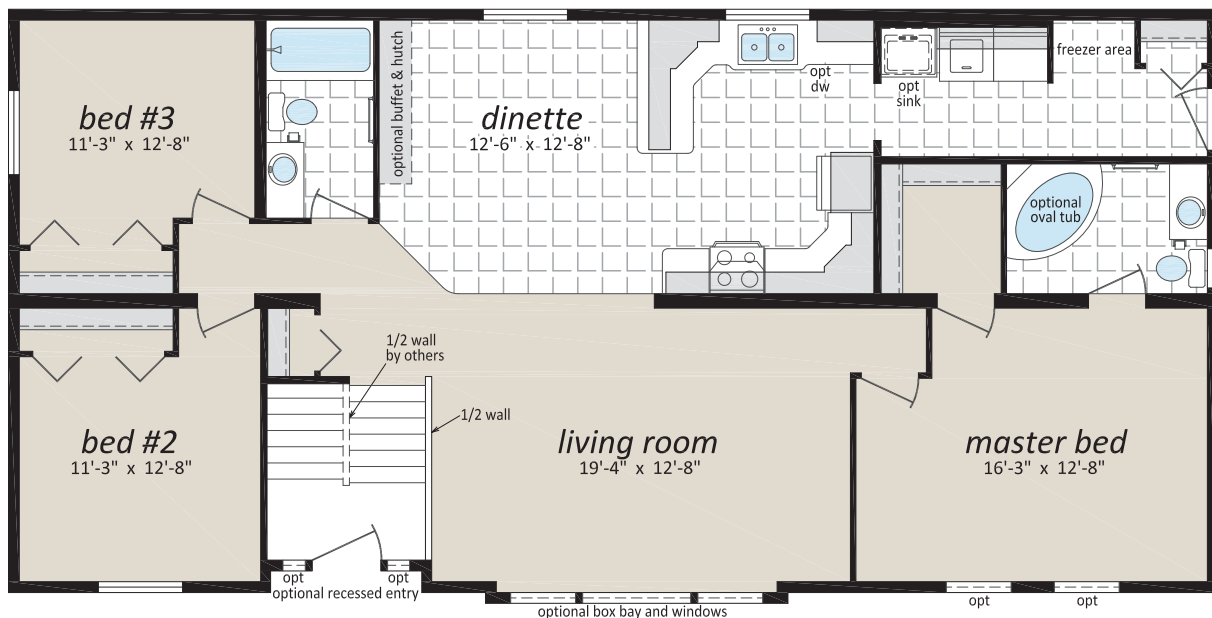
27' x 48' • 1,296 sq. ft.



Split Entry Homes



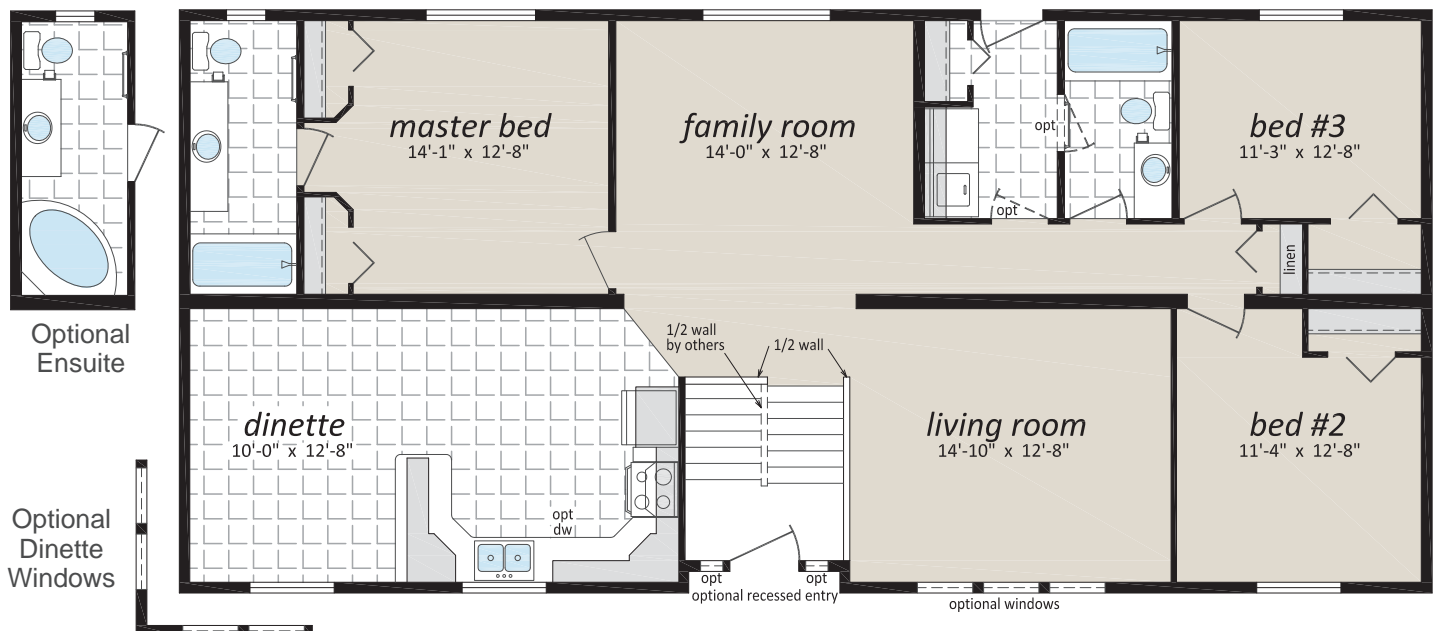
The Alexandria
CDF-220
27' x 56' • 1,512 sq. ft.



Split Entry Homes



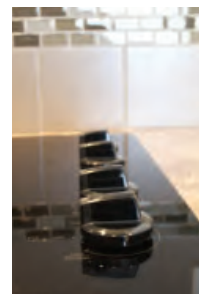
The Mackenzie
CDF-215
27' x 58' • 1,566 sq. ft.





27' x 66' • 1,782 sq. ft.





Popular Optional Features

Exterior

- ☐ Hardie Siding
- ☐ Third Gables
- ☐ Painted "Smart Start" Fascia, Window and Door Trim
- ☐ Painted Smart Start Shutters
- ☐ Garden or Patio Doors
- ☐ Exterior Door with Victoria, 9 Lite, Harlow or Niagara Insert
- ☐ Ladder" Grids in Windows
- ☐ Transom Windows
- ☐ Bay Windows, Skylights & Solar Tubes
- ☐ Octagon Vents
- ☐ Electric Door Chimes
- ☐ Extra Exterior GFI
- ☐ Faux Rock or Shake Accents

Interior

- ☐ Painted Drywall with Ceiling Cove Moulding
- ☐ Clermont White Raised Panel Doors
- ☐ Upgrade Vinyl Flooring
- ☐ Carpeting in Additional Bedrooms
- ☐ 2" Faux Wood Blinds
- ☐ French Doors
- ☐ Mirrored Bi-fold Closet Doors
- ☐ Utility Room Door with Grill
- ☐ Freezer and Laundry Cabinets
- ☐ Soak Sink with Cabinet
- ☐ Ceiling Fan with Lights
- ☐ Recessed Pot Lights
- ☐ LED Light Disk
- ☐ Electric Fireplace with Mantle
- ☐ Gas Fireplace with Fan and Mantle

Kitchen

- ☐ Natural Wood Cabinet Doors
- ☐ Island Work Centre
- ☐ Upgrade High Definition Counter Laminate
- ☐ Upgrade High Definition Bevelled Counter Edging
- ☐ Wood Reveal Counter Edging
- ☐ Appliance Garage
- ☐ Multi Row Tile Backsplash with mosaic
- ☐ Pullout Trash and Recycle bins
- ☐ Pantry Cabinets
- ☐ Additional Bank of Drawers
- ☐ Planning Centre
- ☐ Lazy Susan
- ☐ Black Sink
- ☐ Upgrade Moen Faucets
- ☐ Built-In Dishwasher
- ☐ Combination Microwave/Range Hood
- ☐ Stainless Steel Canopy Range Hood
- ☐ Eye Level Oven with Cook Top
- ☐ Gas or Ceramic Top Self Cleaning Range
- ☐ Two Door Side by Side Refrigerator (with water and ice maker) or Bottom Freezer
- ☐ Stainless Appliances

Bathroom

- ☐ Oval Tub or Corner Oval Tub
- ☐ Jetted Spa Option (available on any tub)
- ☐ 2 Person Jetted Spa Tub
- ☐ 36", 48" or 60" Shower Stall
- ☐ Low-Barrier Shower
- ☐ Grab Bars
- ☐ Assorted Medicine Cabinets
- ☐ Low-Barrier Shower

Utilities

- ☐ On Demand Water Heater
- ☐ 40 Gallon U.S. Gas Water Heater
- ☐ Baseboard Heating
- ☐ Forced Air Electric Furnace
- ☐ Heat Recovery Ventilation Unit
- ☐ Stacking Washer and Dryer
- ☐ Front Loading Washer and Dryer
- ☐ Central Vacuum system and/or Roughed in
- ☐ 200 Amp Service Panel
- ☐ Extra Telephone /Cable Box(es)
- ☐ Pre-wire for Telephone and/or Cable



Did you know?

SRI homes are built indoors, never exposed to the outdoor elements, and we continually inspect our homes to ensure our rigorous construction standards are met. We use quality, brand-name building materials, fixtures and appliances in every home we build.



Authorized Retailer:



This is not a fully detailed specification. SRI Kelowna reserves the right to change specifications, designs, materials and suppliers without notice and without incurring obligation. Information contained herein is from data available at the time of printing. Photos and renderings may show optional features. 09/2020