

The Trivista Series

TRIPLE WIDE MODULAR HOMES!



Proudly made in
Canada
to Canadian
Standards



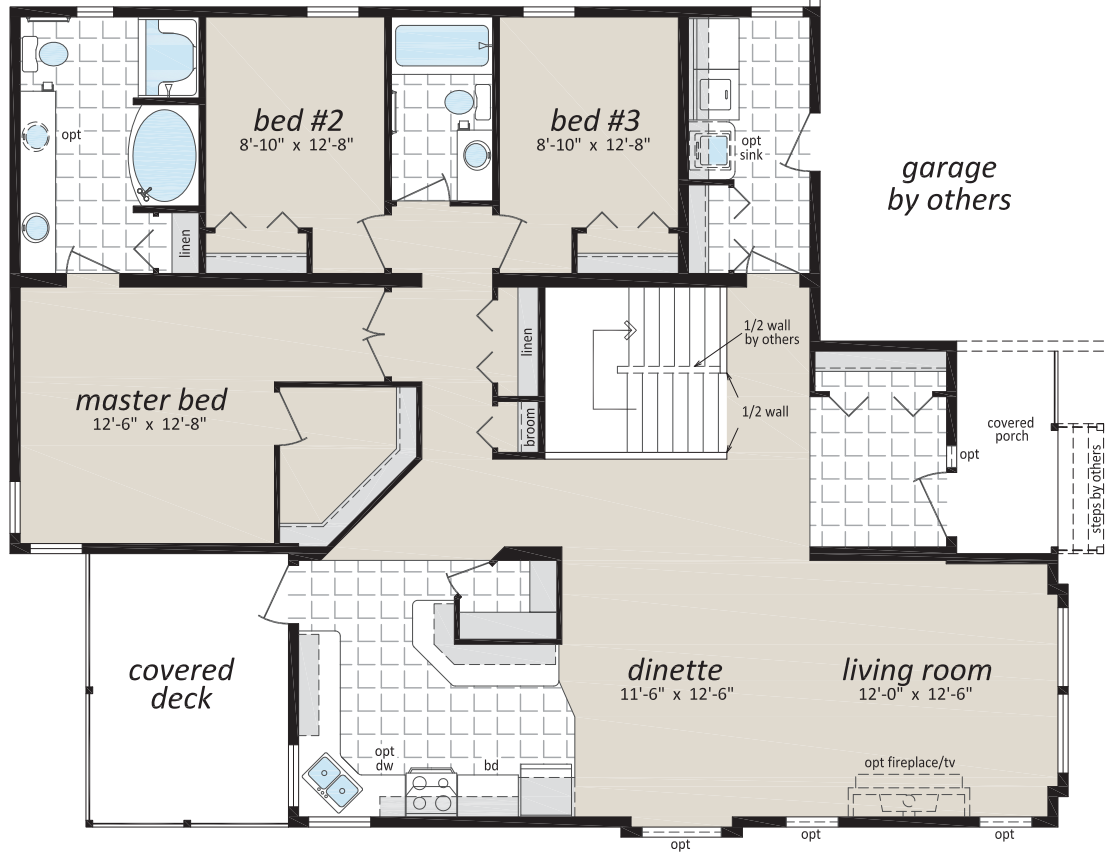
SRI
Kelowna

●●● The Trivista Series

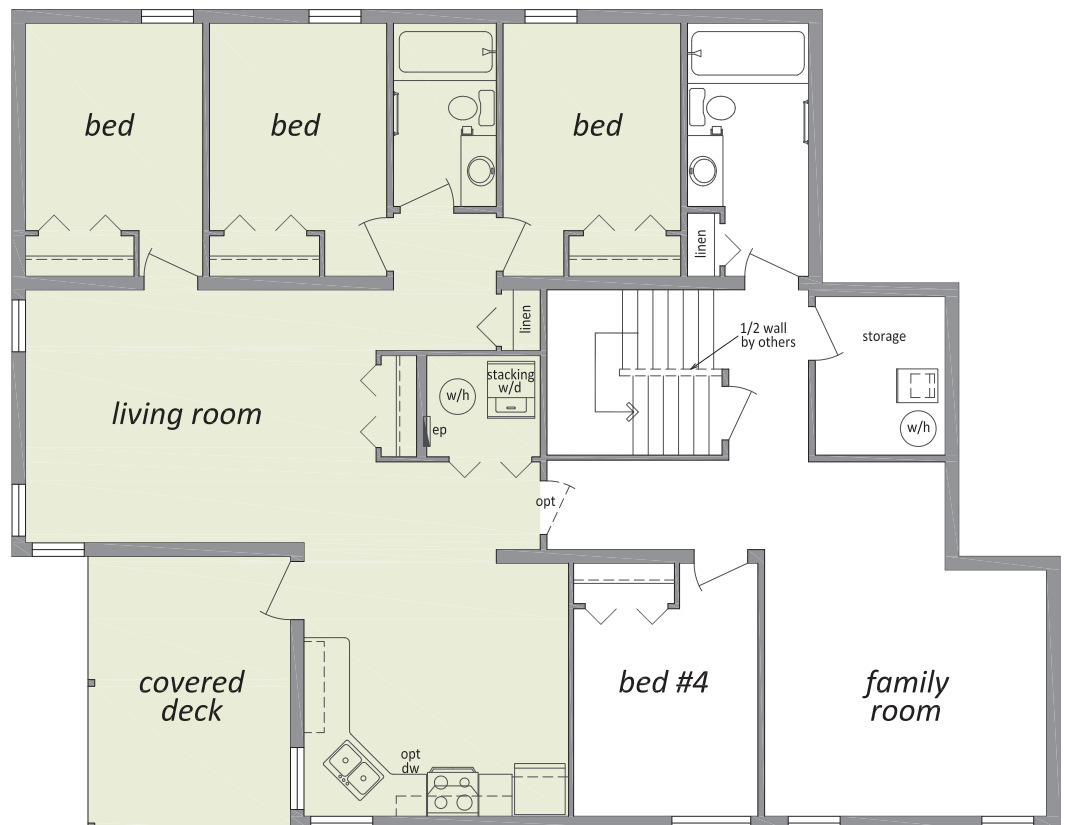
"The Beaumont" - CTF-400

40'6" x 40'46"9"/38' - 1,886 Sq. Ft.

Main Floor



Proposed Basement Layout (By Others)



■ Proposed Basement
■ Rental Suite (By Others)

●●● The Trivista Series

"The Beaumont" - CTF-400

40'6" x 40'46'9"/38' - 1,886 Sq. Ft.

Front View



Rear View



●●● The Trivista Series

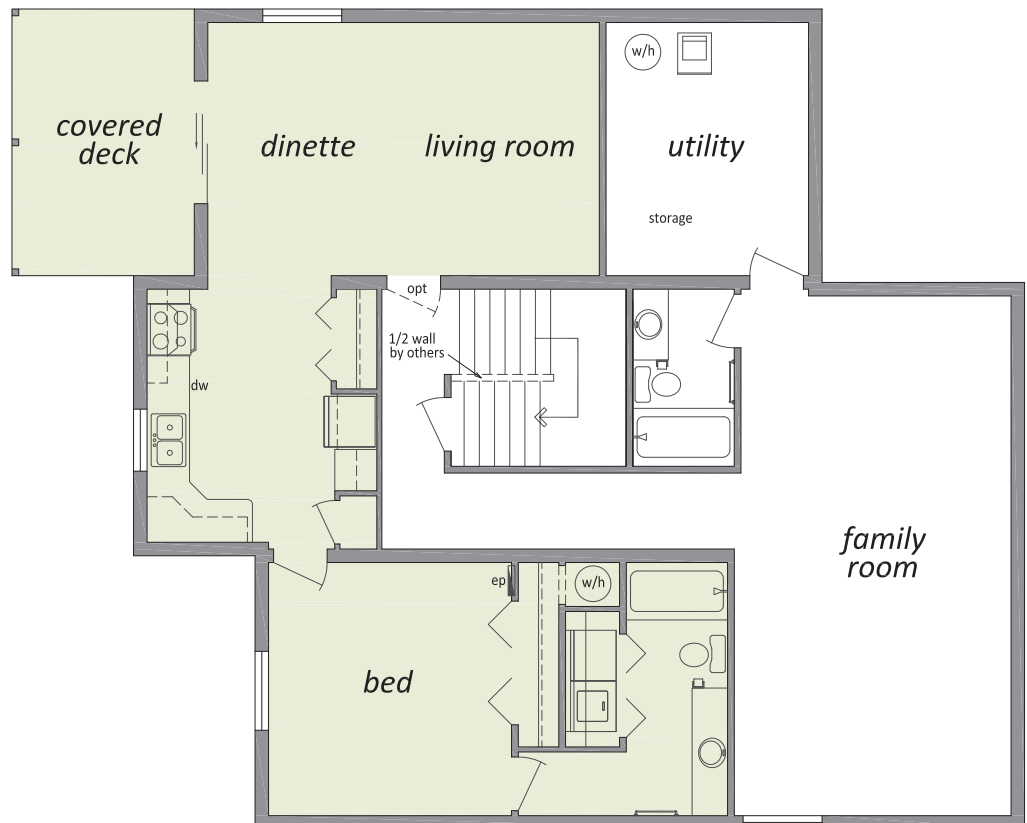
"The Cypress" - CTF-401

40'6" x 31'39"6"/38' - 1,647 Sq. Ft.

Main Floor



Proposed Basement Layout (By Others)



Proposed Basement
Rental Suite (By Others)

●●● The Trivista Series

"The Cypress" - CTF-401

40'6" x 31'/39'6"/38' - 1,647 Sq. Ft.

Front View



Rear View

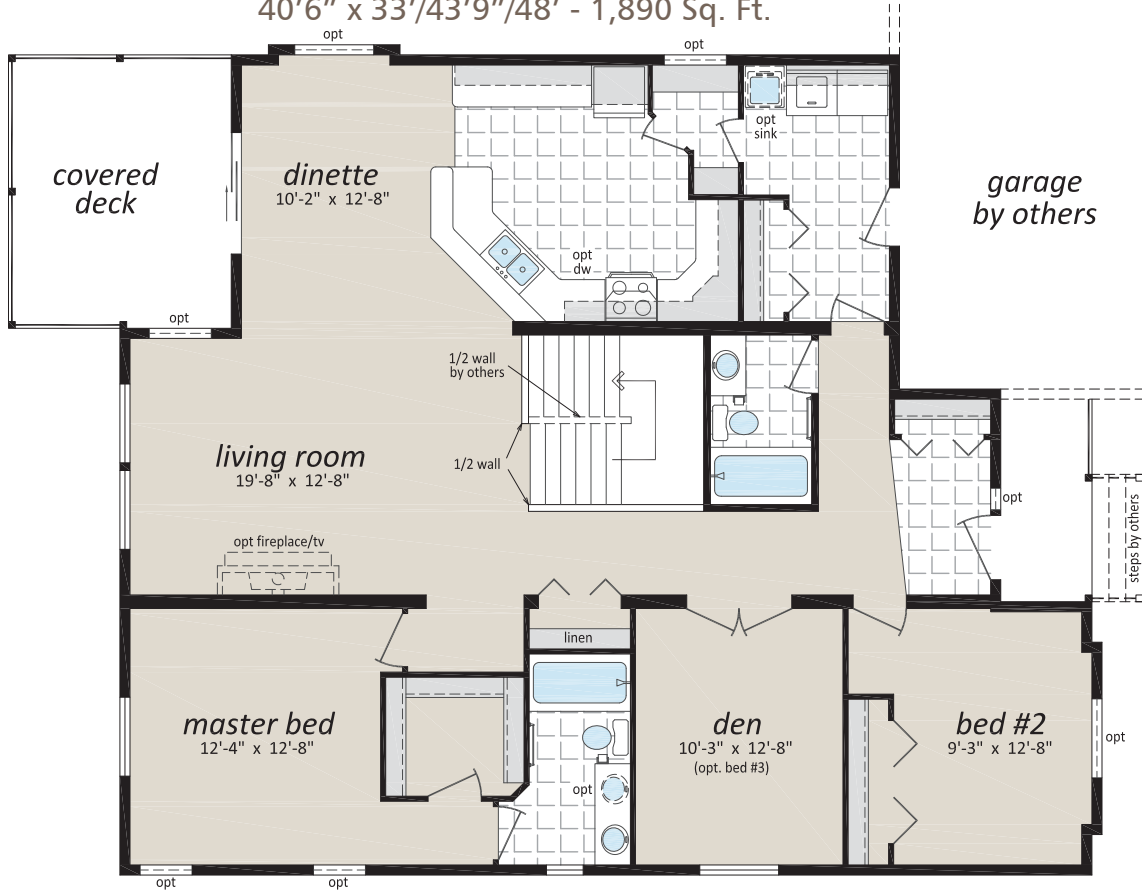


●●● The Trivista Series

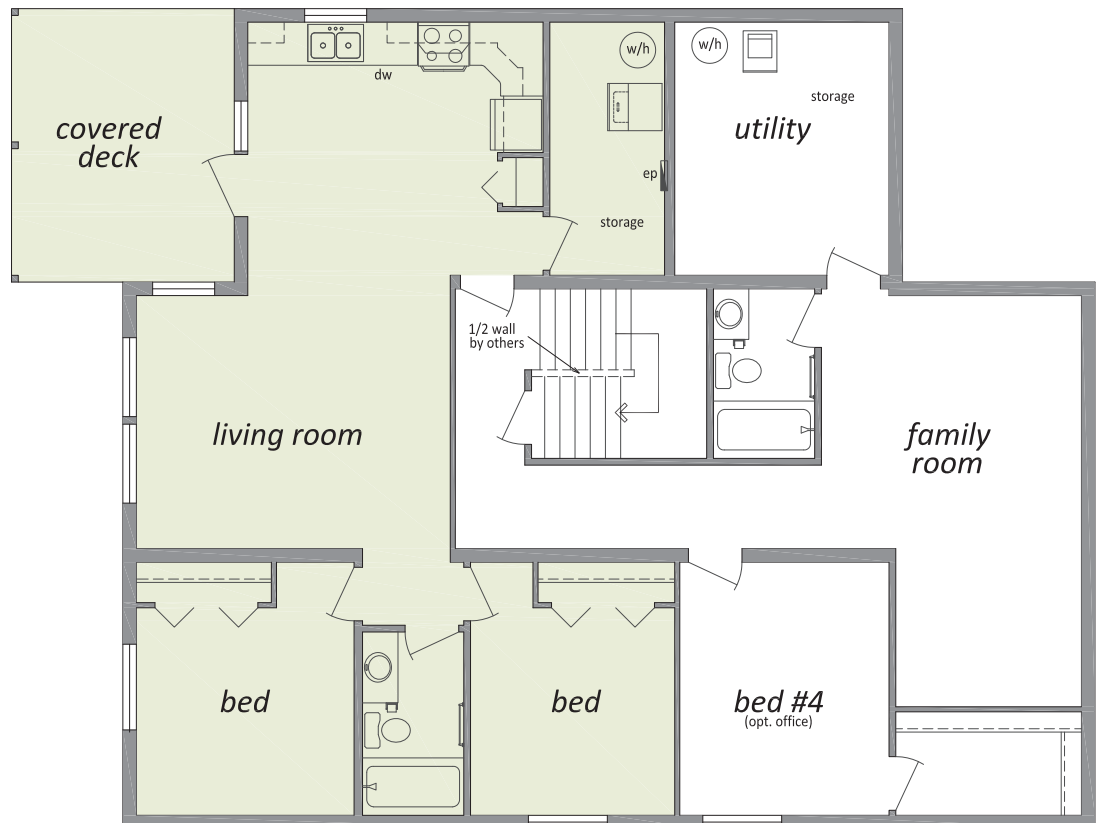
"The Gladstone" - CTF-402

40'6" x 33'43'9"/48' - 1,890 Sq. Ft.

Main Floor



Proposed Basement Layout (By Others)



Proposed Basement
Rental Suite (By Others)

●●● The Trivista Series

"The Gladstone" - CTF-402

40'6" x 33'43'9"/48' - 1,890 Sq. Ft.

Front View



Rear View

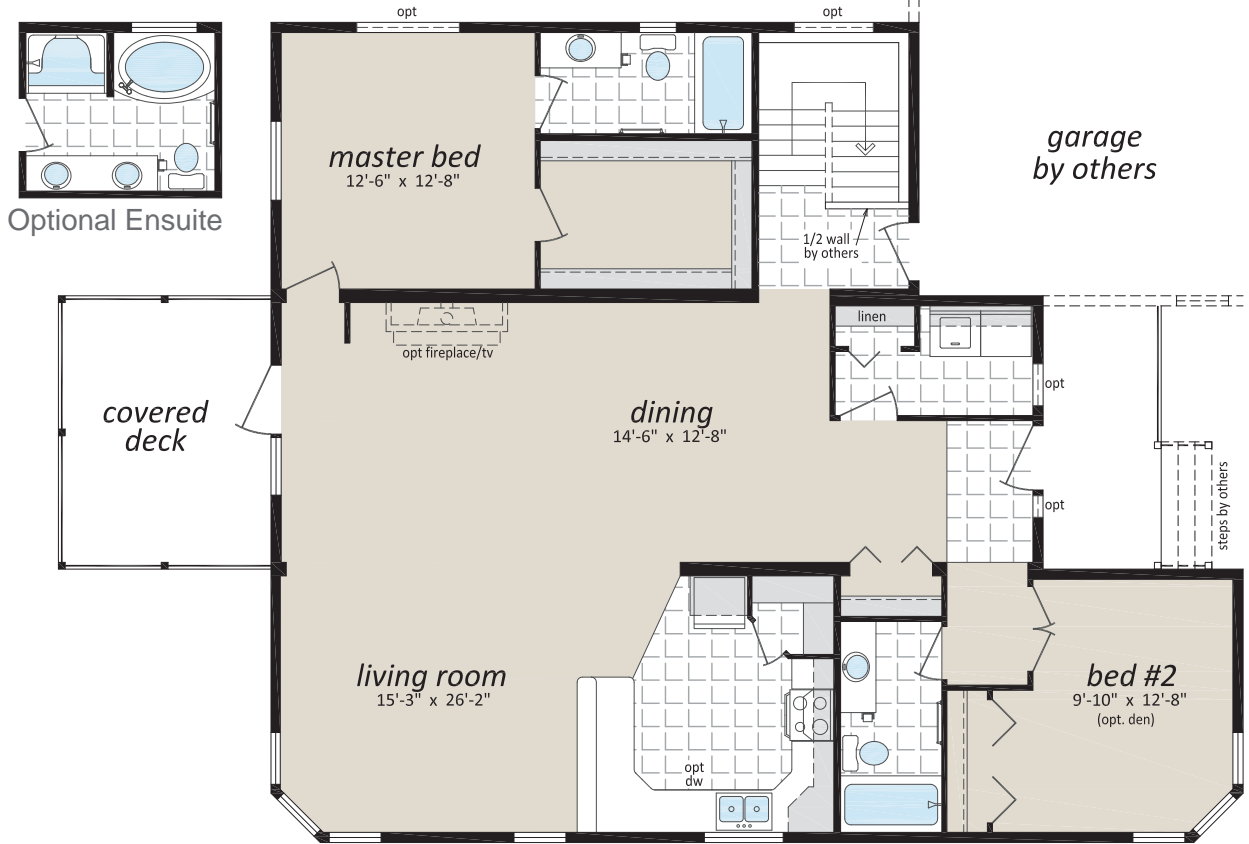


●●● The Trivista Series

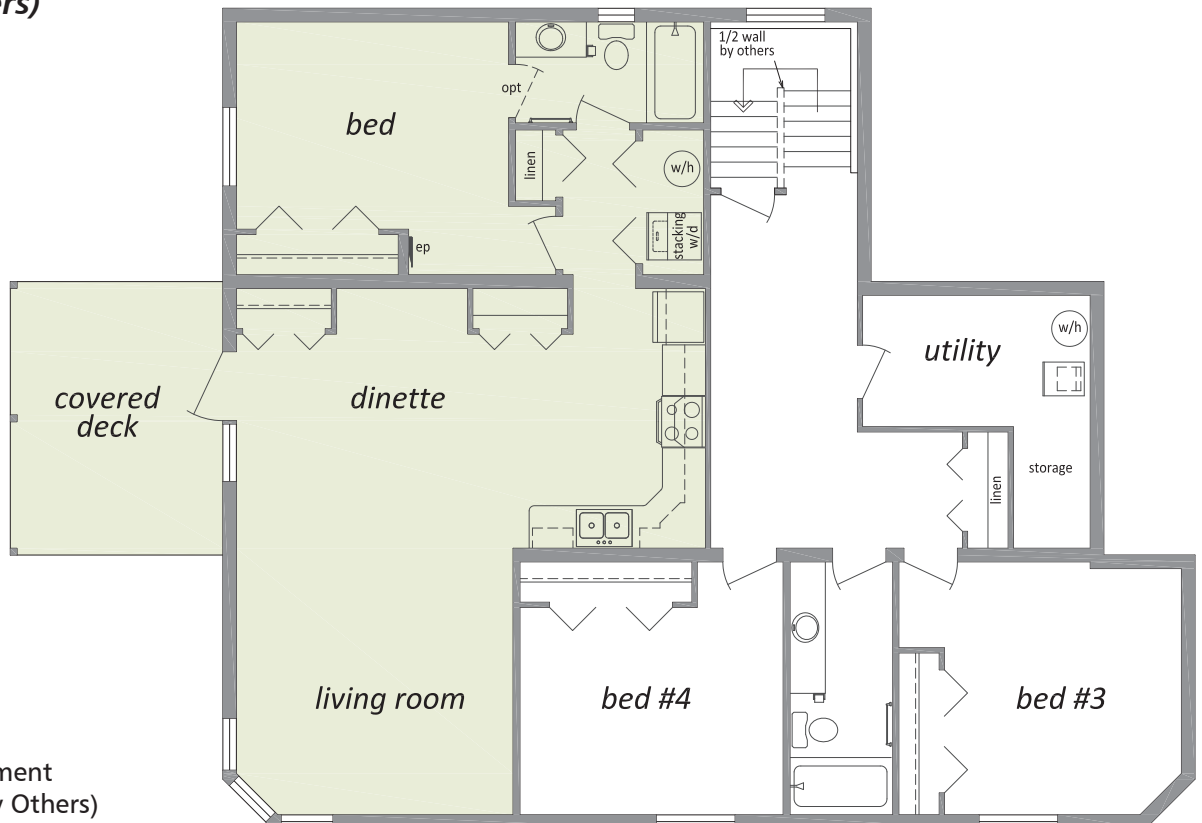
"The Morissey" - CTF-403

40'6" x 32'/38'/48" - 1,816 Sq. Ft.

Main Floor



Proposed Basement Layout (By Others)



■ Proposed Basement
■ Rental Suite (By Others)

●●● The Trivista Series

"The Morissey" - CTF-403

40'6" x 32'/38'/48' - 1,816 Sq. Ft.

Front View



Rear View

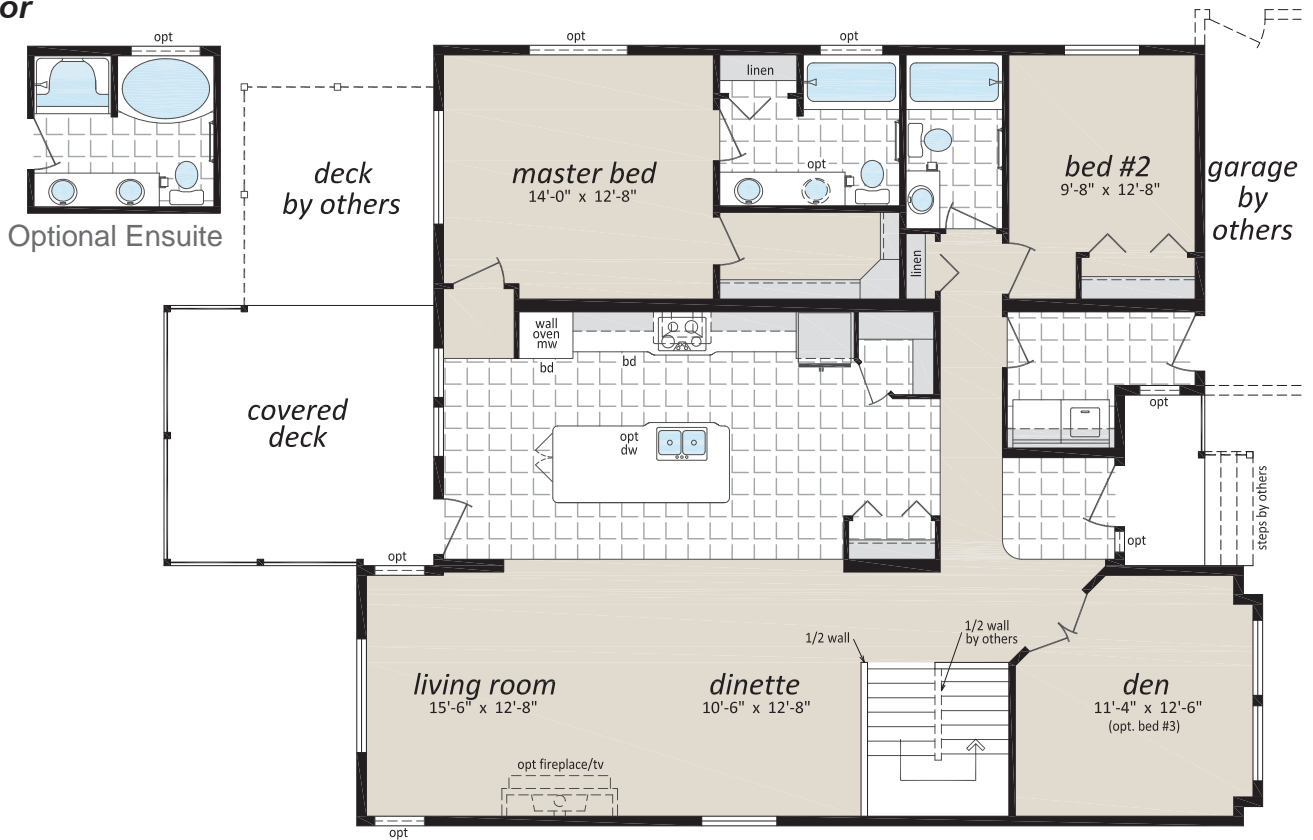


●●● The Trivista Series

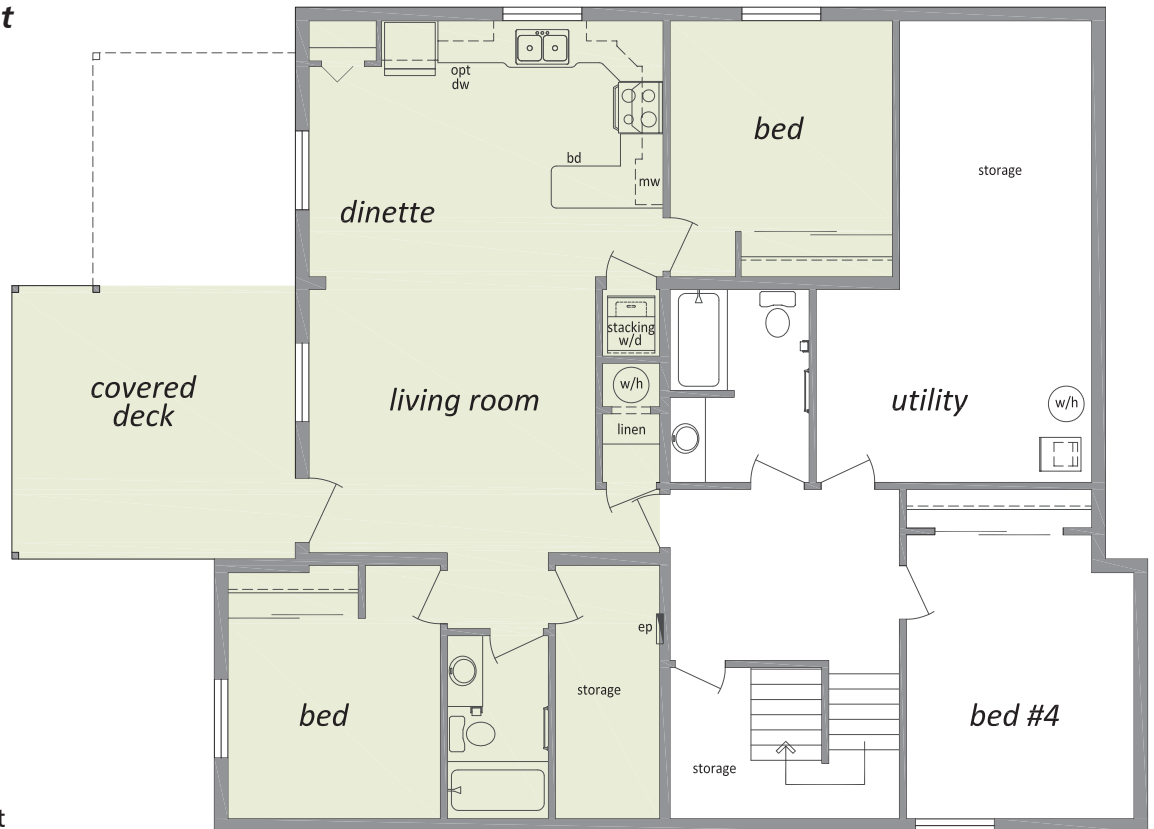
"The Goldstream" - CTF-404

40'6" x 40'/35'6"/46' - 1,890 Sq. Ft.

Main Floor



Proposed Basement Layout (By Others)



Proposed Basement
Rental Suite (By Others)

●●● The Trivista Series

"The Goldstream" - CTF-404

40'6" x 40'/35'6"/46' - 1,890 Sq. Ft.

Front View



Rear View

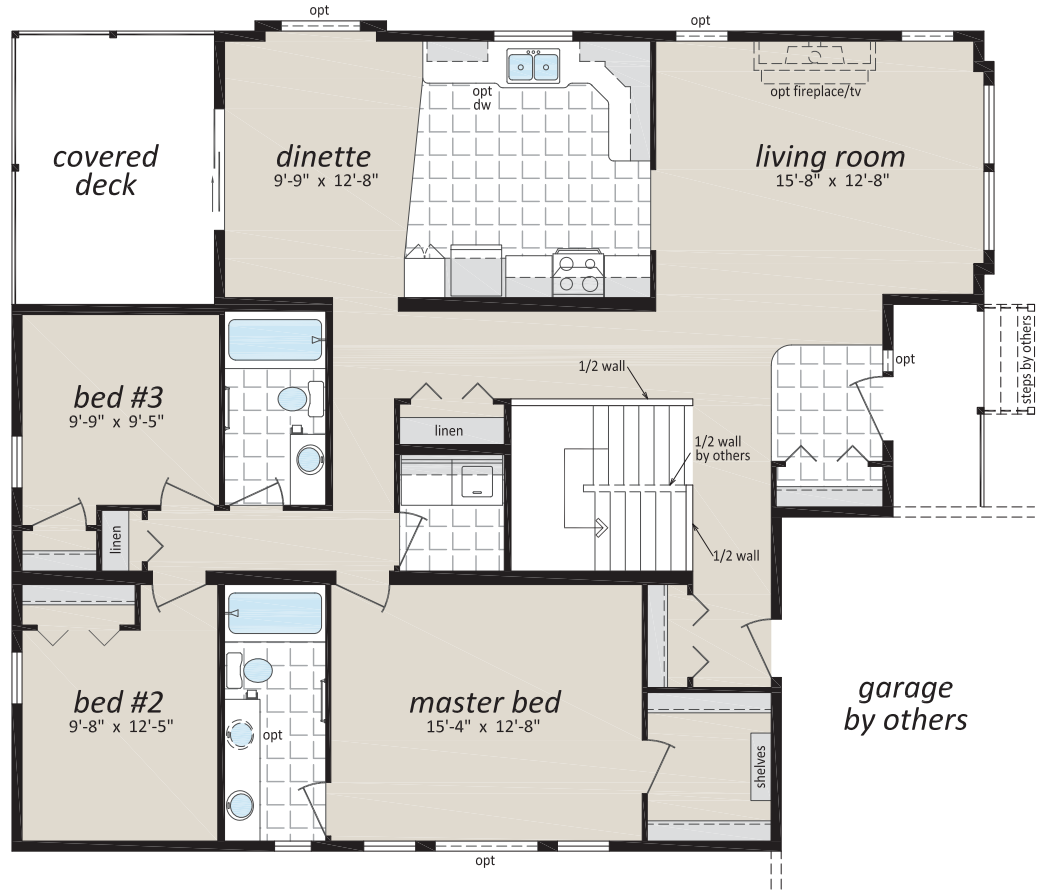


●●● The Trivista Series

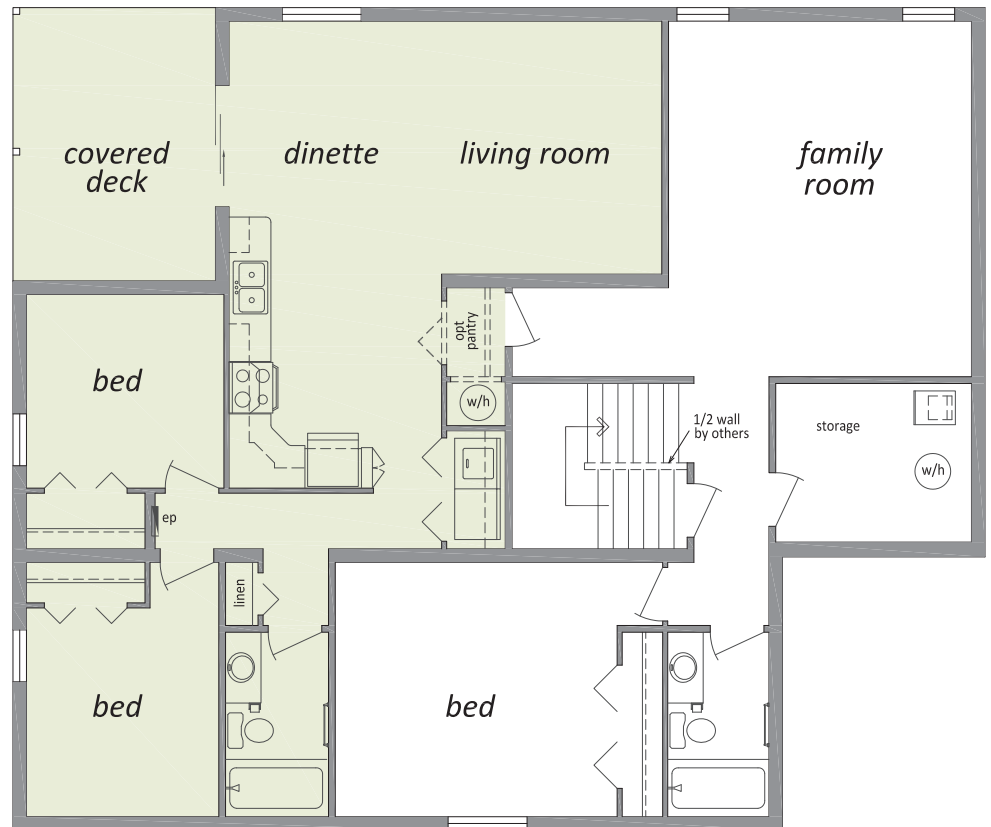
"The Roseberry" - CTF-405

40'6" x 38'/43'6"/38' - 1,809 Sq. Ft.

Main Floor



Proposed Basement Layout (By Others)



Proposed Basement
Rental Suite (By Others)

●●● The Trivista Series

"The Roseberry" - CTF-405

40'6" x 38'/43'6"/38' - 1,809 Sq. Ft.

Front View



Rear View



●●● The Trivista Series

Standards and Specifications

Exteriors

- ✦ Maintenance Free Vinyl Siding
- ✦ Fibreglass Shingles
- ✦ 5/12 Gable Style Roof with R52 Insulation
- ✦ Coloured Aluminium Fascia
- ✦ Coach Lights at all Exterior Doors
- ✦ 6-Panel Insulated Exterior Doors
- ✦ Low E/Argon Energy Efficient Windows with Screens & Security Latches
- ✦ 2x6 Exterior Walls @ 24" w/ R22 Insulation
- ✦ Modular House Wrap
- ✦ 23/32" OSB T&G Floor Sheathing - Screwed and Glued
- ✦ Engineered Floor System
- ✦ Exterior G.F.I. Receptacle
- ✦ Frost Free Tap
- ✦ Covered Rear Deck

Interiors

- ✦ 8' High Walls
- ✦ Textured Ceilings
- ✦ Craftsman Square-edge White Interior Trim
- ✦ Ceiling Cove Moulding
- ✦ Painted Drywall with Rounded Corners
- ✦ Conmore White Passage Doors
- ✦ Lever Handles on all Doors
- ✦ Bifold Closet Doors
- ✦ Carpet in LR, DR, All BR's, Hall & Den/FR
- ✦ Linoleum Elsewhere
- ✦ Designer Light & Hardware Pkg
- ✦ Privacy Locks on Bath & MBR
- ✦ Decora Switches & Receptacles T/O

Kitchen

- ✦ Rangehood with Two Speeds and Light, Vented to Exterior
- ✦ Stainless Steel Kitchen Sink
- ✦ Single-Lever Faucet /w Sprayer
- ✦ Modular PVC Cabinets & Designer Hardware
- ✦ Raised Corner Upper Cabinet with Frosted Glass Accent (Some Models Only)
- ✦ Extended Sink Cabinet & Countertop (Some Models Only)
- ✦ Raised Deep Cabinet over Refrigerator
- ✦ Adjustable Shelves
- ✦ Bank of Drawers (4 drawers)
- ✦ Pots & Pan Drawers (3 drawers)
- ✦ 6" x 6" Tile Backsplash

Bathroom

- ✦ One Piece Tub and Shower Single-Lever Faucet
- ✦ Dual Handle Vanity Faucets
- ✦ Designer Light Fixture over Vanity
- ✦ Shower Liner and Curved Rod in Bathroom
- ✦ 4" x 4" Spa-white Tile Backsplash
- ✦ Exhaust Fan in Bathroom
- ✦ G.F.I. Protected Receptacle
- ✦ Privacy Locks

Utilities

- ✦ Smoke/CO Detectors
- ✦ Electrical Panel – Shipped Loose
- ✦ Built to Applicable Provincial Codes



●●● The Trivista Series

Popular Optional Features

Exterior

- ☐ Painted “Smart Start” Fascia, Window and Door Trim
- ☐ Third Gable (8’ to 24’)
- ☐ Vinyl “Shake” Siding in Gable
- ☐ Hardie Plank Siding
- ☐ Pewter Toe Kick and/or Thumb Latch
- ☐ Garden and Patio Doors
- ☐ Exterior Door with Victoria, 9 Lite, Harlow or Niagara Insert
- ☐ Trapezoid and Octagon Windows
- ☐ Transom Windows
- ☐ Acrylic Block Windows
- ☐ “Ladder” Grids in Windows
- ☐ Painted Smart Start Shutters
- ☐ Turbine Vents
- ☐ Octagon Vents
- ☐ Additional Exterior GFI
- ☐ Faux Rock Accents
- ☐ Rafter Tails

Interior

- ☐ Laminate Flooring
- ☐ Ceramic Tile Flooring
- ☐ Upgrade Lino
- ☐ 2” Faux Wood Blinds
- ☐ Chair Rail
- ☐ French Doors
- ☐ Mirrored Closet Doors
- ☐ Freezer Cabinets
- ☐ Soak Sink with Cabinet
- ☐ Ceiling Fan with Lights
- ☐ Recessed Fluorescent Lights
- ☐ Insulation in Inside Walls for Sound Proofing
- ☐ Archways
- ☐ Deluxe Drapery Package
- ☐ Electric Fireplace with Mantle

Kitchen

- ☐ Upgrade High Definition Counter Laminate
- ☐ Upgrade High Definition Bevelled or Cascade Counter Edging
- ☐ Natural Wood Cabinet Doors
- ☐ Island Work Centre
- ☐ Appliance Garage
- ☐ Planning Centre
- ☐ Lazy Susan
- ☐ Reveal Counter Edging
- ☐ White or Black Sink
- ☐ Built-In Dishwasher
- ☐ Combination Microwave/Range Hood
- ☐ Appliances in White, Black or Stainless
- ☐ Eye Level Oven and Cook Top
- ☐ Self Cleaning Range
- ☐ Two Door Side by Side Refrigerator (with water and ice maker)
- ☐ Raised Dishwasher Cabinet with Drawer below
- ☐ Pullout Trash and Recycle bins

Bathroom

- ☐ Oval Tub or Corner Oval Tub
- ☐ Jetted Spa Option (available on any tub)
- ☐ 2 Person Jetted Tub
- ☐ 36”, 48” or 60” Shower Stall
- ☐ Barrier Free Shower
- ☐ Tri-Mirror Medicine Cabinet
- ☐ Grab Bars
- ☐ Deluxe Tub Drapery
- ☐ Banjo Countertop on Vanity
- ☐ Vanity Top Medicine Cabinets

Utilities

- ☐ Gas Fireplace with Air Circulating Fan
- ☐ Stacking Washer and Dryer
- ☐ Front Loading Washer and Dryer
- ☐ Central Vacuum System
- ☐ Roughed in for Central Vacuum
- ☐ 200 Amp Service Panel
- ☐ Extra Telephone /Cable Box(es)
- ☐ Pre-wire for Telephone and/or Cable

The Trivista Series

TRIPLE WIDE MODULAR HOMES!



Authorized Retailer:



This is not a fully detailed specification. SRI Homes reserves the right to change specifications, designs, materials and suppliers without notice and without incurring obligation. Information contained herein is from data available at the time of printing. Photos and renderings may show optional features. 09/2020