



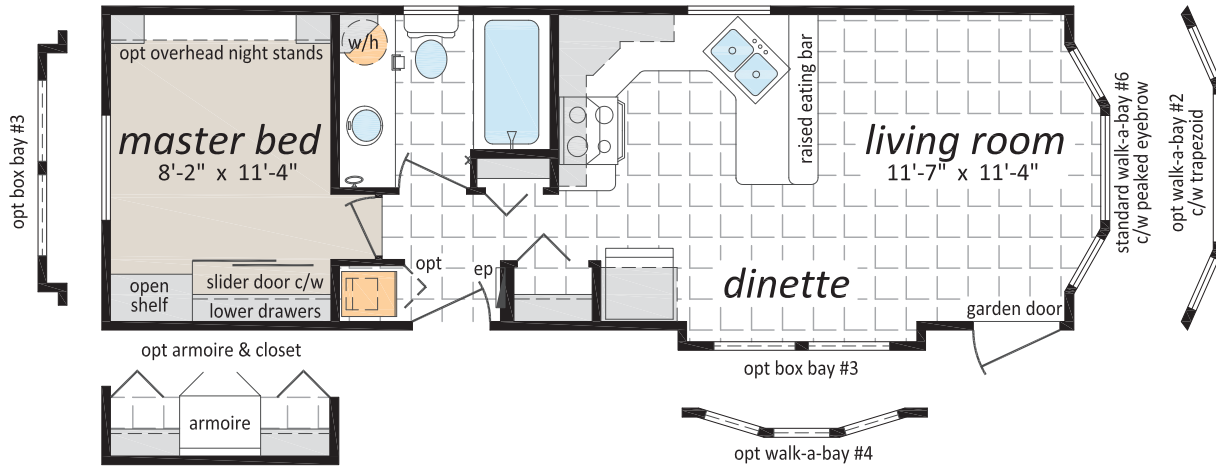
The Resort Series

Park Model Homes

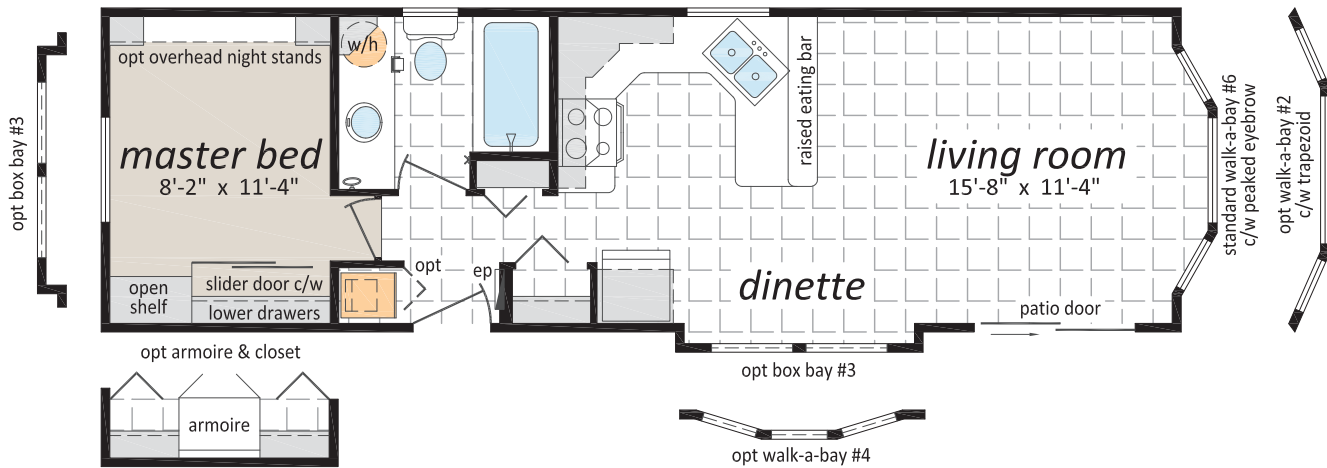


The Resort Series

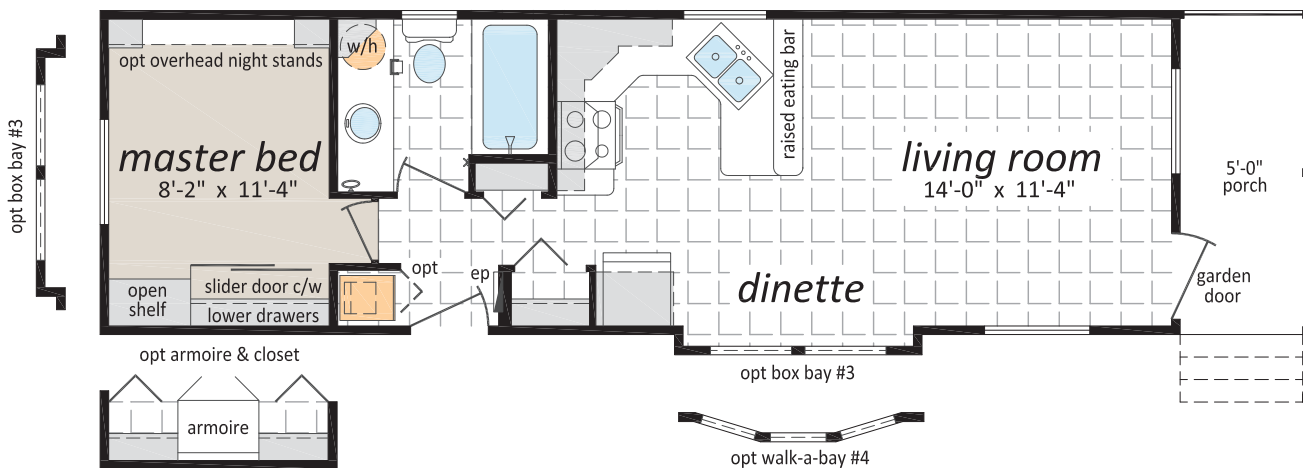
PM-1236, 12' x 36'



PM-1240-A, 12' x 40'



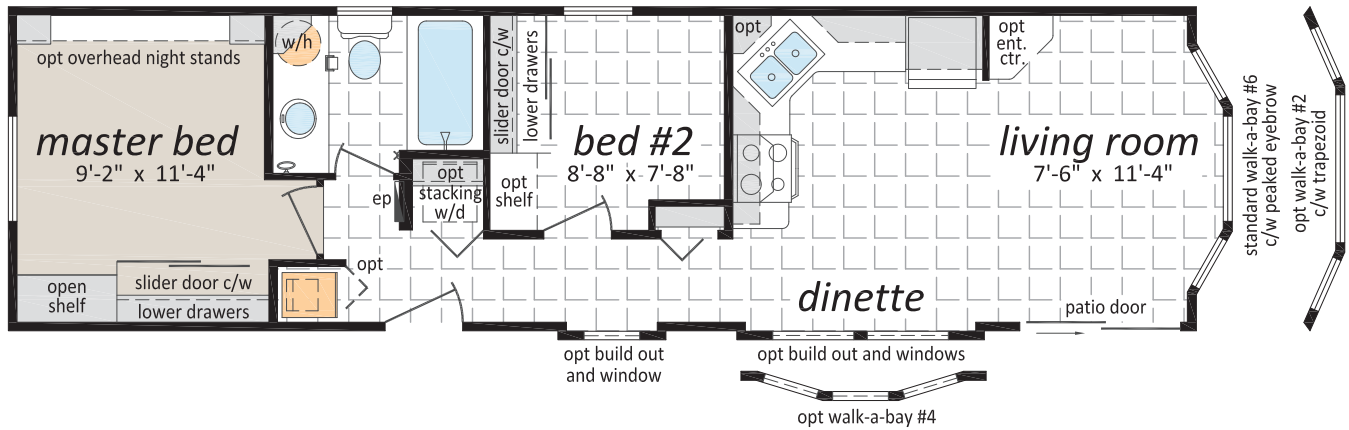
PM-1240-B, 12' x 40' (plus porch)



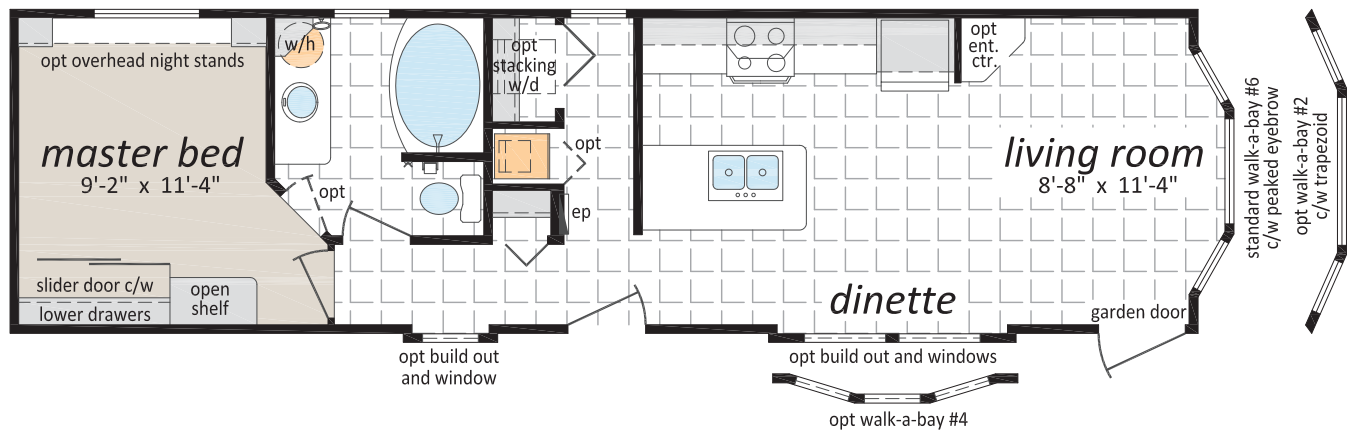
The Resort Series



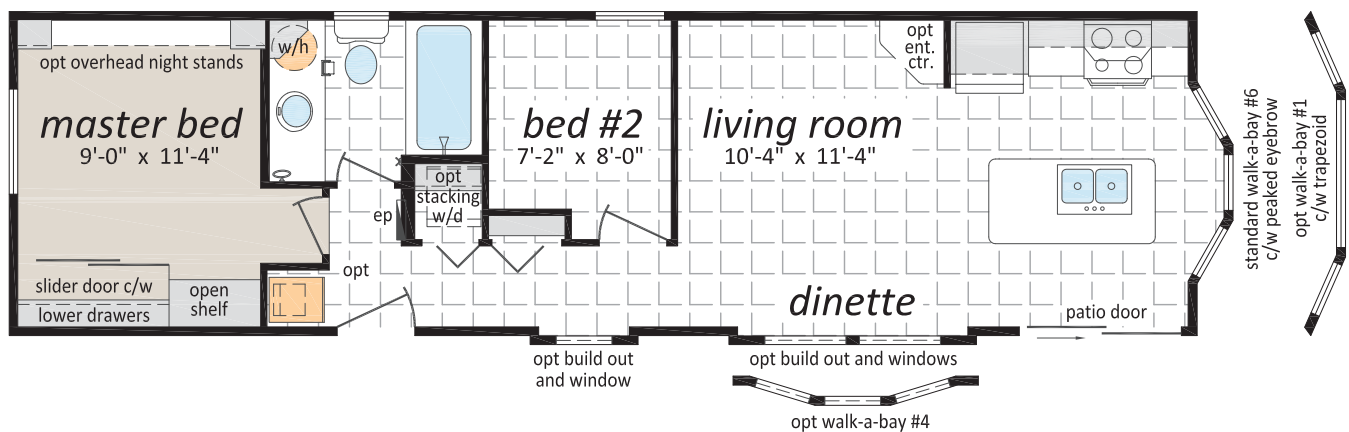
PM-1244-A, 12' x 44'



PM-1244-B, 12' x 44'



PM-1244-C, 12' x 44'



Note: Some eave side bays may require optional 3rd gable and eyebrow.

Standards and Specifications

Exteriors

- Maintenance Free Vinyl Siding
- Vinyl Trim on all Windows & Doors
- Fibreglass Shingles
- Nominal 7/12 Roof, 5/12 Interior Ceiling
- 12" Fixed Eave Overhang
- 7' 6" Sidewall
- Coach Lights
- 6-Panel Insulated Exterior Door
- Energy Efficient Patio or Garden Door at Front Entry
- Three Window Walk-a-bay c/w Peaked Eyebrow (*Applicable models*)
- Low E & Argon Gas Thermal Pane PVC Windows with Screens and Security Latches
- 2x4 Exterior Walls @ 24" o.c. c/w Belt Rails
- 19/32" Floor Decking - Screwed and Glued
- 2x6 Floor Joists @ 16" o.c.
- Box Steel Frame with Detachable Hitch
- Weatherproof Outside GFI Receptacle
- Frost Free Exterior Tap
- Heat Tape Receptacle at Water Heater
- Insulation: Ceiling R-20, Walls R-12, Floors R-20

Interiors

- Cathedral Ceiling Throughout
- Textured Ceilings
- Carpet in Master Bedroom
- Linoleum Elsewhere
- Flat-Panel White Interior Doors
- White Cove Ceiling Moulding
- Decora Receptacles & Switches
- Designer Light & Hardware Package
- 2" Blinds Throughout

Kitchen

- 18 Cu. Ft. Refrigerator
- 30" Self Clean Gas Range
- Rangehood /w Two Speeds & Light
- Stainless Steel Kitchen Sink
- Single-Lever Faucet /w Sprayer
- PVC Modular Cabinets
- Upper Cabinet /w Frosted Glass Accent (*Applicable Models*)
- Deep Fridge Cabinet
- Pantry Closet (*Applicable Models*)
- Bank of Drawers
- Tile Backsplash

Bathroom

- One Piece Tub and Shower w/ Single-Lever Faucet
- Dual Handle Vanity Faucets
- Designer Light Fixture over Vanity
- Towel Ring and Robe Hooks
- Bathroom Window
- Corner Medicine Cabinet
- Banjo Vanity (*Applicable Models*)
- Exhaust Fan in Bathroom
- G.F.I. Protected Receptacle
- Privacy Lock on Bathroom Door
- Tile Backsplash

Utilities

- 30 Gallon Electric Water Heater
- 95% High Efficiency Gas Furnace
- Propane Line Front and Rear
- 50 Amp Electrical Service with 25' Cord
- Two Phone/Cable Boxes
- Smoke Detectors as per code
- Fire Extinguisher
- Built to CSA Z-241 Standard

Popular Optional Features

Exteriors

- ☐ Sequoia Vinyl Siding
- ☐ Hardie Plank Siding
- ☐ Faux Rock Accents
- ☐ Exterior Third Gables
- ☐ Shed Dormers
- ☐ Smart Start Exterior Fascia, Window and Door Trim
- ☐ Bay Windows and Build-out Windows
- ☐ Trapezoid Windows above Front Bay
- ☐ Skylights
- ☐ Painted Smart Start Shutters
- ☐ 9 Lite Exterior Door
- ☐ Garden and Patio Doors
- ☐ Door Chimes

Interiors

- ☐ Painted Drywall w/ Rounded Corners
- ☐ Ceiling Fan with Lights
- ☐ LED Lighting
- ☐ Dining Room Chandelier
- ☐ Bedroom Wall Light
- ☐ Conmore White Passage Doors
- ☐ Pocket Doors
- ☐ Mirrored Closet Doors
- ☐ Entertainment Centre
- ☐ Bedroom Cabinets, Drawers & Armoires
- ☐ Electric Fireplace with Mantle
- ☐ Solar Tubes

Kitchen

- ☐ Natural Wood Cabinet Doors
- ☐ Black Sink
- ☐ Pull out Trash and Recycle Bins
- ☐ Built-in Dishwasher
- ☐ Combination Microwave/Rangehood

Bathroom

- ☐ Jetted Tub
- ☐ Three, Four or Five Foot Shower Stall

Utilities

- ☐ Stacking Washer & Dryer (110 V)
- ☐ Park Pack A/C

"And many more - see your SRI Retailer for details".



This is not a fully detailed specification. SRI Homes reserves the right to change specifications, designs, materials and suppliers without notice and without incurring obligation. Information contained herein is from data available at the time of printing. Square footage and dimensions are approximate. Furniture placement shown is for suggestion only. Photos and renderings may show optional features. 09/2020