



The Trivista Series

Triple Wide Modular Homes

Front View



CTF-402 "The Gladstone"
40'6" x 33'/43'9"/48' - 1,890 Sq. Ft.

*Artist Renderings
Optional Deluxe Exterior Shown
Some features shown may be optional*

Rear View

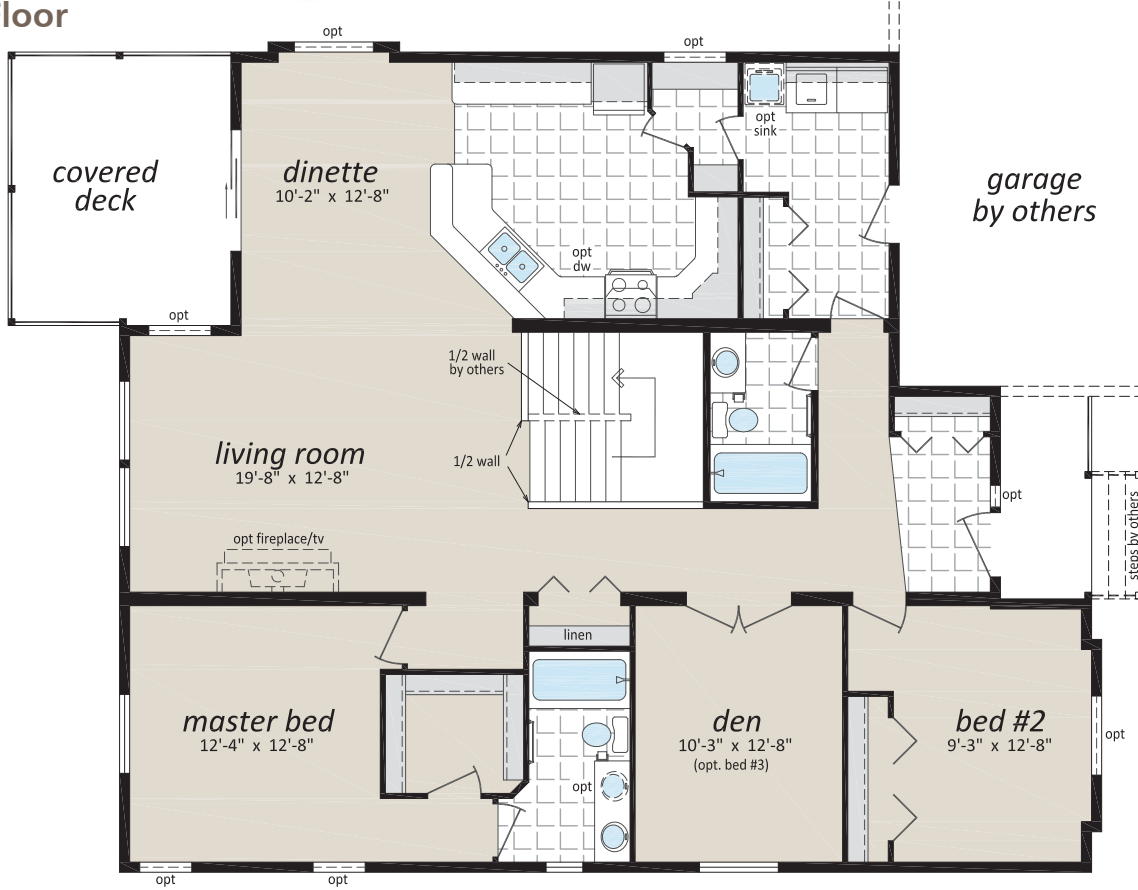


www.srikelowna.ca

Follow us:  



Main Floor



CTF-402 "The Gladstone"

40'6" x 33'/43'9"/48' - 1,890 Sq. Ft.

Proposed Basement Layout - By Others

Proposed Basement Rental Suite (By Others)

