



The Trivista Series

Triple Wide Modular Homes

Front View





CTF-401 "The Cypress"
40'6" x 31'/39'6"/38' - 1,647 Sq. Ft.

*Artist Renderings
Optional Deluxe Exterior Shown
Some features shown may be optional*

Rear View

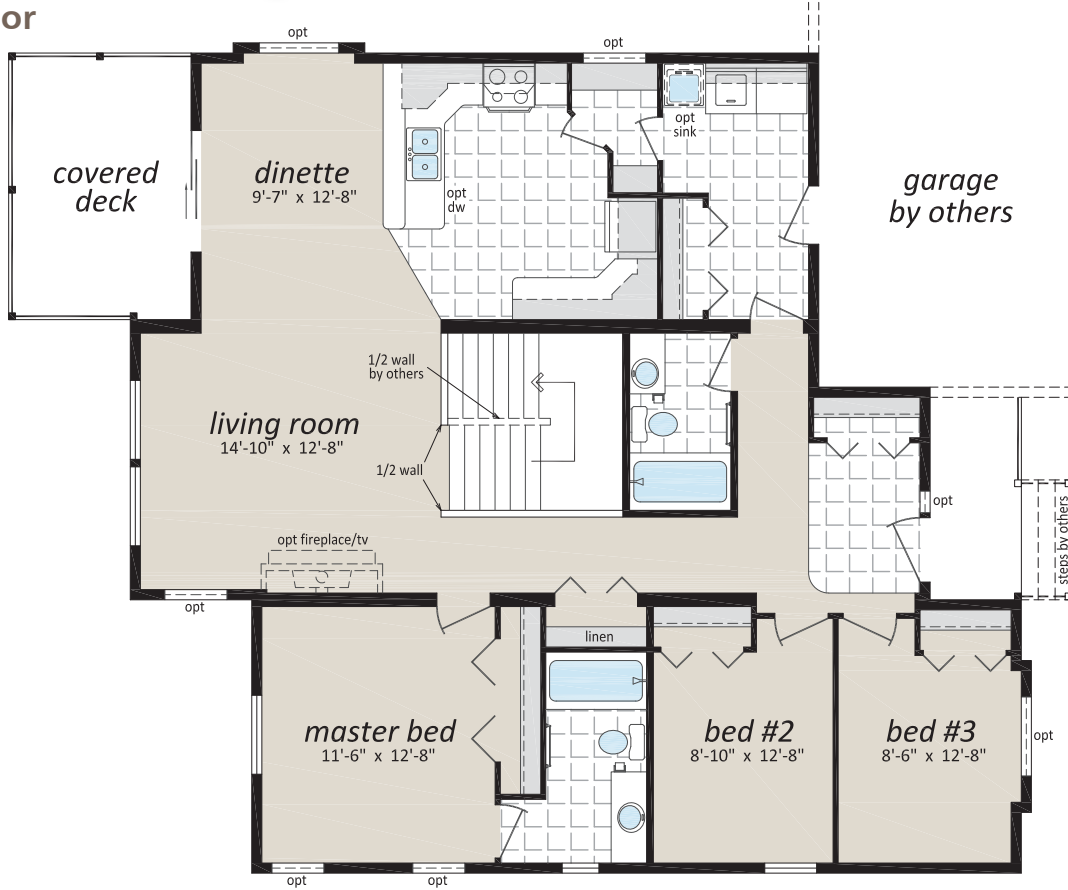


www.srikelowna.ca

Follow us:  



Main Floor



CTF-401 "The Cypress"
40'6" x 31'/39'6"/38' - 1,647 Sq. Ft.

Proposed Basement Layout - By Others

Proposed Basement
Rental Suite
(By Others)

